

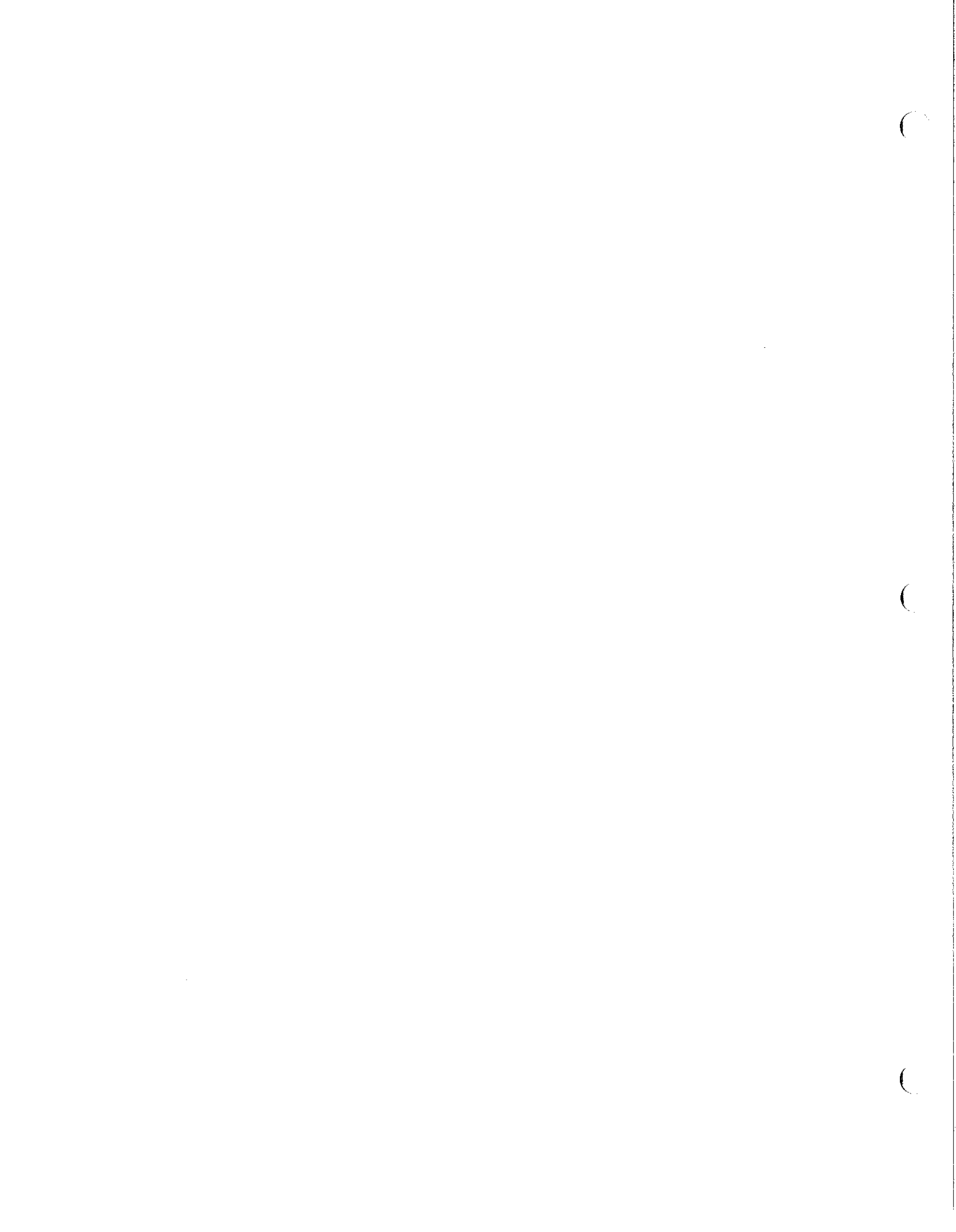
**H & S
Mfg. Co. Inc.**

Parts Book

SUPER DUTY

HYDRAULIC

FORAGE BOX



INSTRUCTIONS FOR ORDERING PARTS

All service parts should be ordered through your authorized H & S dealer. They will be able to give you faster service if you will provide them with the following

1. Model & Serial number is located in the front center of the box.
2. All reference to left or right apply to the Super Duty as viewed from the rear.
3. Parts should not be ordered from illustration only. Please order by complete part number.
4. If your dealer has to order parts - give shipping instructions:

VIA truck - large pieces (please specify local truck lines)

VIA United Parcel Service (include full address)

H&S MFG. CO. INC.	
MARSHFIELD, WIS.	
MOD. NO.	<input type="text"/>
SER. NO.	<input type="text"/>
DESCR.	<input type="text"/>

PLEASE RECORD NUMBERS FOR YOUR UNIT FOR QUICK REFERENCE

ABOUT IMPROVEMENTS

H&S IS CONTINUALLY STRIVING TO IMPROVE IT'S PRODUCTS

We must therefore, reserve the right to make improvements or changes whenever it becomes practical to do so without incurring any obligation to make changes or additions to the equipment previously sold.

FIGURE 1
HOUSING COMPONENTS
SIDES

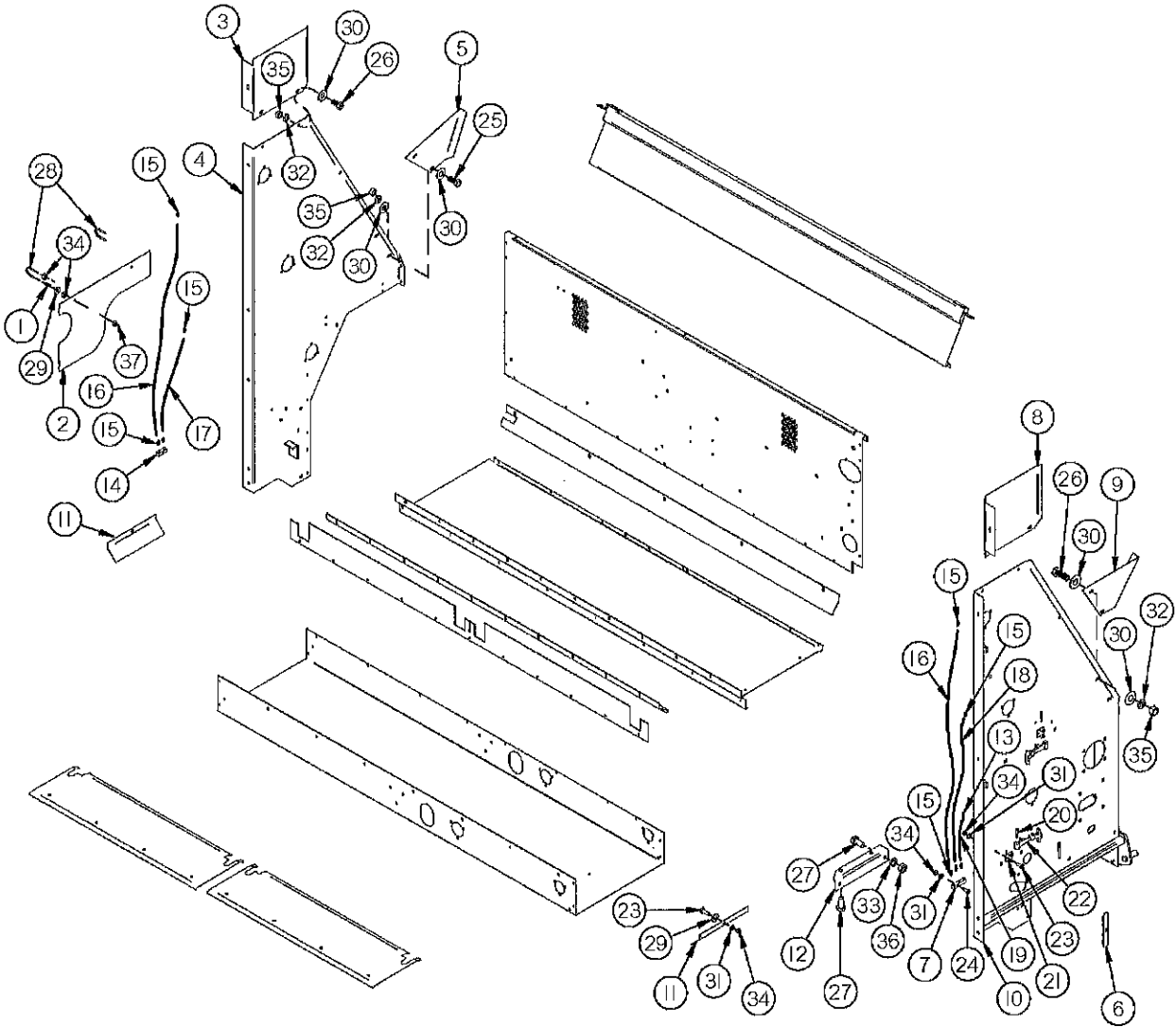


FIGURE 1
HOUSING COMPONENTS
SIDES

<u>ITEM</u>	<u>QTY</u>	<u>PART #</u>	<u>DESCRIPTION</u>
1	1	S1	SPRING
2	1	S2	POLY SHIELD
3	1	S3	LEFT SIDE PANEL TOP
4	1	S4	LEFT SIDE PANEL
5	1	S5	LEFT EMERGENCY STOP PANEL
6	1	SD86	SLOT COVER
7	1	SD83	GREASE BLOCK (3-PORT)
*	1	SD146	GREASE BLOCK (4-PORT) 4TH BEATER ONLY
8	1	S9	RIGHT SIDE PANEL TOP
9	1	S11	RIGHT EMERGENCY STOP PANEL
10	1	SD4	RIGHT SIDE PANEL
11	2	S20	APRON SIDE SPACER
12	1	SD99	GEARBOX ANGLE
13	5	SD82	GREASE LINE FITTING 90°
14	1	SD79	GREASE BLOCK
*	1	SD83	GREASE BLOCK (3-PORT) 4TH BEATER ONLY
15	5	S47	GREASE LINE FITTING
16	2	SD80	GREASE LINE (54-1/2")
17	1	SD81	GREASE LINE (40-1/4")
18	1	SD98	GREASE LINE (29")
19	1	SD109	GREASE LINE (14")
20	2	X195	PIN
21	2	X194	LATCH MOUNTING BRACKET
22	2	X192	RUBBER LATCH
23	3	YBHH08100	BOLT, 1/4" X 3/4" GR. 5
24	1	YBHH08010	BOLT, 1/4" X 1" GR. 5
25	4	YBHH12135	BOLT, 3/8" X 3/4" GR. 5
26	4	YBHH12010	BOLT, 3/8" X 1" GR. 5
27	4	YBHH16010	BOLT, 1/2" X 1" GR. 5
28	2	YBPU08005	PIPE U BOLT, 1/4"-20 X 3/4" PIPE, 1-1/4" ID, 2-1/4" IL, 1-1/4" THREAD
29	3	YWFL08005	WASHER, FLAT, 1/4" USS
30	12	YWFL12005	WASHER, FLAT, 3/8" USS
31	4	YWLO08005	WASHER, LOCK, 1/4"
32	8	YWLO12005	WASHER, LOCK, 3/8"
33	4	YWLO16005	WASHER, LOCK, 1/2"
34	8	YNHX08005	HEX NUT, 1/4"-20
35	8	YNHX12005	HEX NUT, 3/8"-16
36	2	YNHX16005	HEX NUT, 1/2"
37	4	YNNY08005	HEX NUT, NYLON LOCKNUT, 1/4"-20

NOTE: * MEANS NOT SHOWN

FIGURE 2
HOUSING COMPONENTS
FRONT & BOTTOM

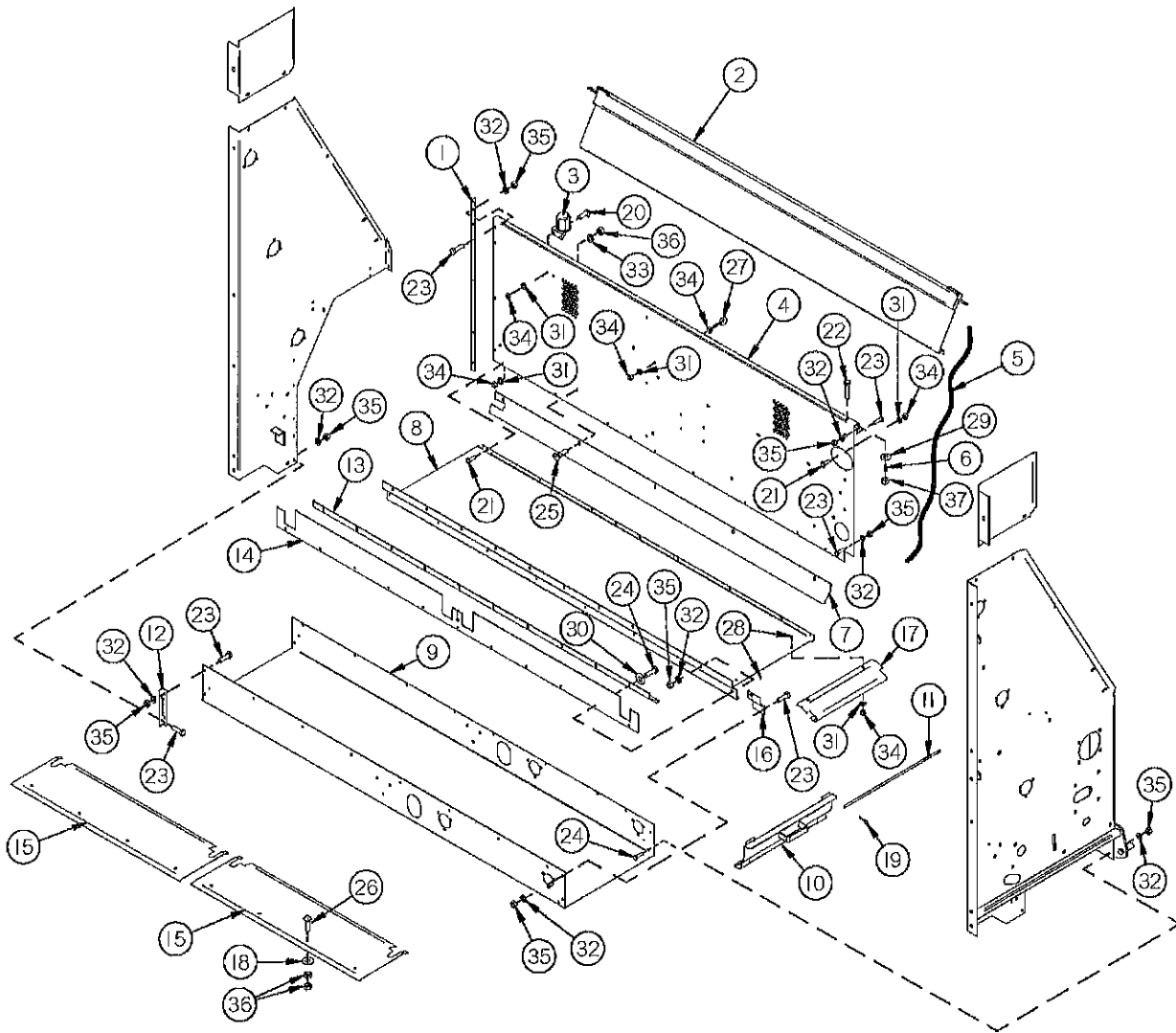


FIGURE 2

HOUSING COMPONENTS FRONT & BOTTOM

<u>ITEM</u>	<u>QTY</u>	<u>PART #</u>	<u>DESCRIPTION</u>
1	1	S22	LEFT FRONT ANGLE
2	1	S370	EMERGENCY STOP PANEL
3	1	CHM38	PLUG STORAGE
4	1	SD2	FRONT MAIN PANEL
5	1	S8	EMERGENCY STOP CABLE
*	2	ES14	THIMBLE
*	2	ES15	CABLE CLAMP
6	3	S7	SPRING FOR EMERGENCY STOP
7	1	SD5	CROSS CONVEYOR FRONT HOLDOWN
8	1	SD6	CROSS APRON PAN
9	1	SD7	RETURN PAN
10	1	SD8	RETURN PAN END
11	1	SD10	RETURN PAN END ROD
12	1	S19	LEFT RETURN PAN ANGLE
13	1	SD11	CROSS CONVEYOR BACK HOLDOWN
14	1	S306	RUBBER SEAL
15	2	PB74	DRIVE SHAFT PANEL
16	1	SD12	TUB END
17	1	SD13	TUB EXTENSION
18	8	S304	TIGHTENER WASHER
19	1	YPHR02010	HAIR PIN, #21-07
20	2	YBHH08015	BOLT, 1/4" X 1/2" GR. 5
21	10	YBHH08100	BOLT, 1/4" X 3/4" GR. 5
22	3	YBHH08025	BOLT, 1/4" X 1-1/2" GR. 5
23	20	YBHH10105	BOLT, 5/16" X 3/4" GR. 5
24	13	YBHH10010	BOLT, 5/16" X 1" GR. 5
25	5	YBCR12065	CARR. BOLT, 3/8" X 3/4" GR. 5
26	8	YBCR12015	CARR. BOLT, 3/8" X 1-1/2" GR. 5
27	2	YBTE08005	TURNED EYE BOLT, 1/4" X 1" FULL THREAD
28	2	YSTM08004	SLOTTED TRUSS HEAD ZINC MACHINE SCREW, 1/4"-20 x 3/4"
29	3	YWFL08005	WASHER, FLAT, 1/4" USS
30	11	YWFL10005	WASHER, FLAT, 5/16" USS
31	16	YWLO08005	WASHER, LOCK, 1/4"
32	33	YWLO10005	WASHER, LOCK, 5/16"
33	5	YWLO12005	WASHER, LOCK, 3/8"
34	18	YNHX08005	HEX NUT, 1/4"-20
35	33	YNHX10005	HEX NUT, 5/16"
36	21	YNHX12005	HEX NUT, 3/8"-16
37	3	YNL08005	HEX NUT, TOP LOCK, 1/4"-20

NOTE: * MEANS NOT SHOWN

FIGURE 3

BEATERS

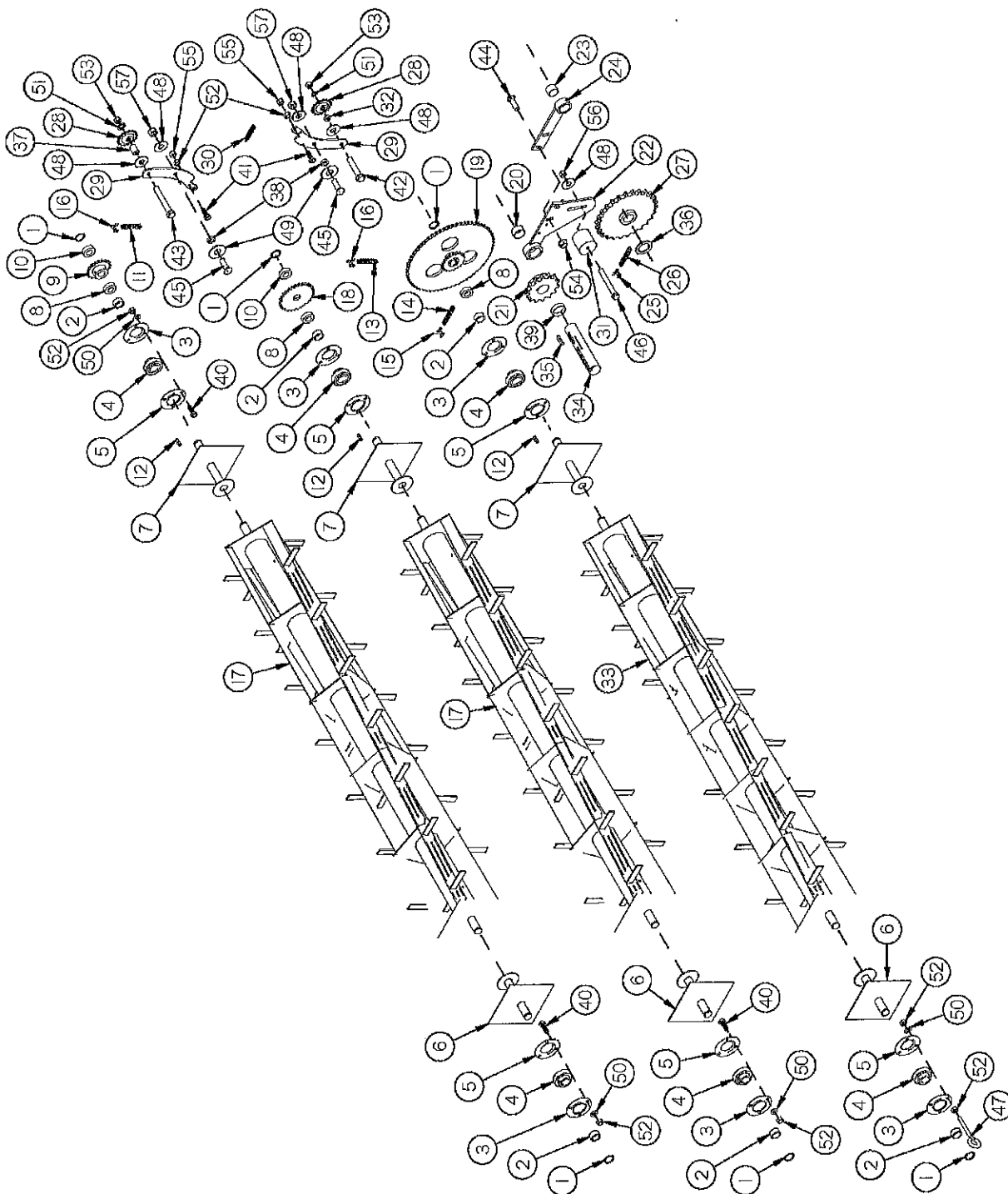


FIGURE 3

BEATERS

<u>ITEM</u>	<u>QTY</u>	<u>PART #</u>	<u>DESCRIPTION</u>
1	6	F73	SNAP RING
2	6	F16	LOCK COLLAR
3	6	F114	BEARING FLANGE W/ZERK
4	6	F115	BEARING (GREASABLE TYPE)
5	6	F14	BEARING FLANGE
6	3	S23	LEFT BEATER STUB SHAFT
7	3	S24	RIGHT BEATER STUB SHAFT
8	3	S218	3/8" SPACER
9	1	S26	3RD BEATER SPROCKET 20 TOOTH
10	1	S219	1/4" SPACER
11	1	X58	2ND TO 3RD BEATER CHAIN (89 PITCHES X #50)
12	3	G23B	5/16" X 1-3/8" SQUARE KEY
13	1	S31	1ST TO 2ND BEATER CHAIN (98 PITCHES X #50)
14	1	SD14	BEATER DRIVE CHAIN (85 PITCHES X #60)
15	1	X61	# 60 CONNECTOR LINK
16	2	D39	# 50 CONNECTOR LINK
17	2	S25	BEATER
18	1	S30	2ND BEATER SPROCKET (30 TO 13 TOOTH)
19	1	SD15	1ST BEATER SPROCKET (20 TO 65 TOOTH)
20	1	SD16	BUSHING (2-1/4" OD X 2" ID X 1.125")
21	1	SD17	WORM SHAFT SPROCKET (100-B-14)
22	1	SD18	WORM SHAFT BRACE
23	1	S44	BUSHING (2" OD X 1-3/4" ID X 1.125")
24	1	SD19	DRIVE SHAFT BRACE
25	1	33SV77	# 100 CONNECTOR LINK
26	1	SD20	DRIVE CHAIN (#100 X 47 PITCH)
27	1	SD21	DRIVE SHAFT SPROCKET (100-C-26)
28	2	K101	SPROCKET 17 TOOTH
29	2	SD77	TIGHTENER BAR

FIGURE 3
BEATERS

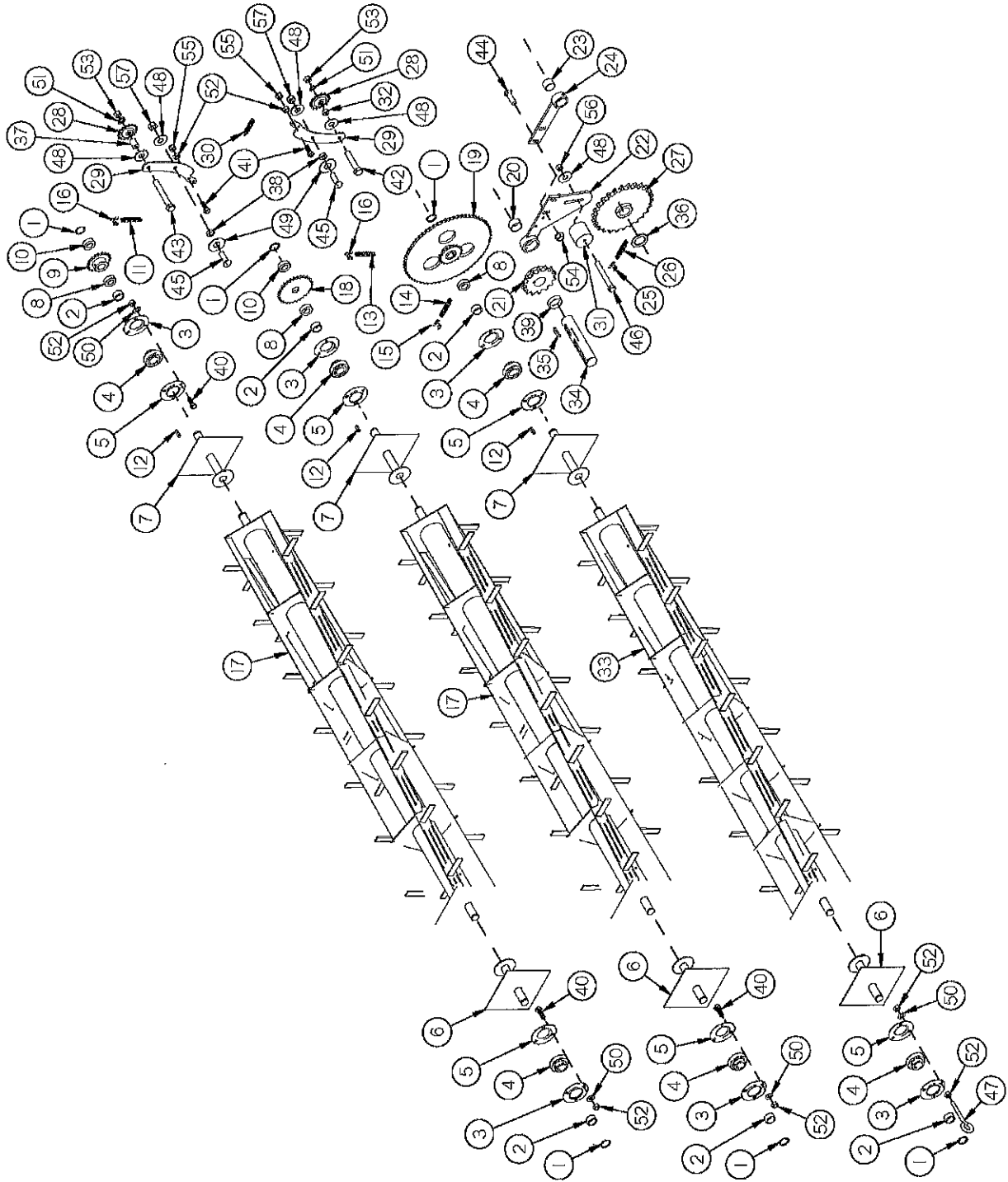


FIGURE 3

BEATERS

<u>ITEM</u>	<u>QTY</u>	<u>PART #</u>	<u>DESCRIPTION</u>
29	2	SD77	TIGHTENER BAR
30	1	R27	SPRING
31	1	SD84	POLY TIGHTENER
32	1	SD88	TENSIONER SPACER
33	1	SD107	1ST BEATER (5 CROSSES)
34	1	SD89	OUTPUT SHAFT (A110)
35	1	G139	3/8" X 1-1/2" SQUARE KEY HARDENED
36	1	S36	DRIVE SHAFT SPACER
37	1	SD212	TENSIONER SPACER
38	2	SD177	SPACER
39	1	SDPI07	OUTPUT SHAFT SPACER
40	17	YBHH12010	BOLT, 3/8" X 1" GR. 5
41	2	YBHH12035	BOLT, 3/8" X 1-1/4" GR. 5
42	1	YBHH16080	BOLT, 1/2" X 2-1/2" GR. 5
43	1	YBHH16115	BOLT, 1/2" X 3-1/2" GR. 5
44	2	YBCR16015	CARR. BOLT, 1/2" X 1-1/4" GR. 5
45	2	YBCR16010	CARR. BOLT, 1/2" X 1-1/2" GR. 5
46	1	YBCR16045	CARR. BOLT, 1/2" X 4" GR. 5
47	1	YBTE12015	TURNUED EYE BOLT, 3/8" X 2-1/2"
48	5	YWFL16005	WASHER, FLAT, 1/2" USS
49	2	YWFL24005	WASHER, FLAT, 3/4" USS
50	18	YWLO12005	WASHER, LOCK, 3/8"
51	2	YWLO16005	WASHER, LOCK, 1/2"
52	21	YNHX12005	HEX NUT, 3/8"-16
53	2	YNHX16005	HEX NUT, 1/2"
54	2	YNFG16005	HEX NUT, FLANGED-LOCK, 1/2"-13
55	2	YNNY12005	HEX NUT, NYLON LOCKNUT, 3/8"
56	1	YNRL16005	HEX NUT, REVERSIBLE-SIDE LOCK, 1/2"-13
57	2	YNL16005	HEX NUT, TOP LOCK, 1/2"-13

FIGURE 4

APRON DRIVE

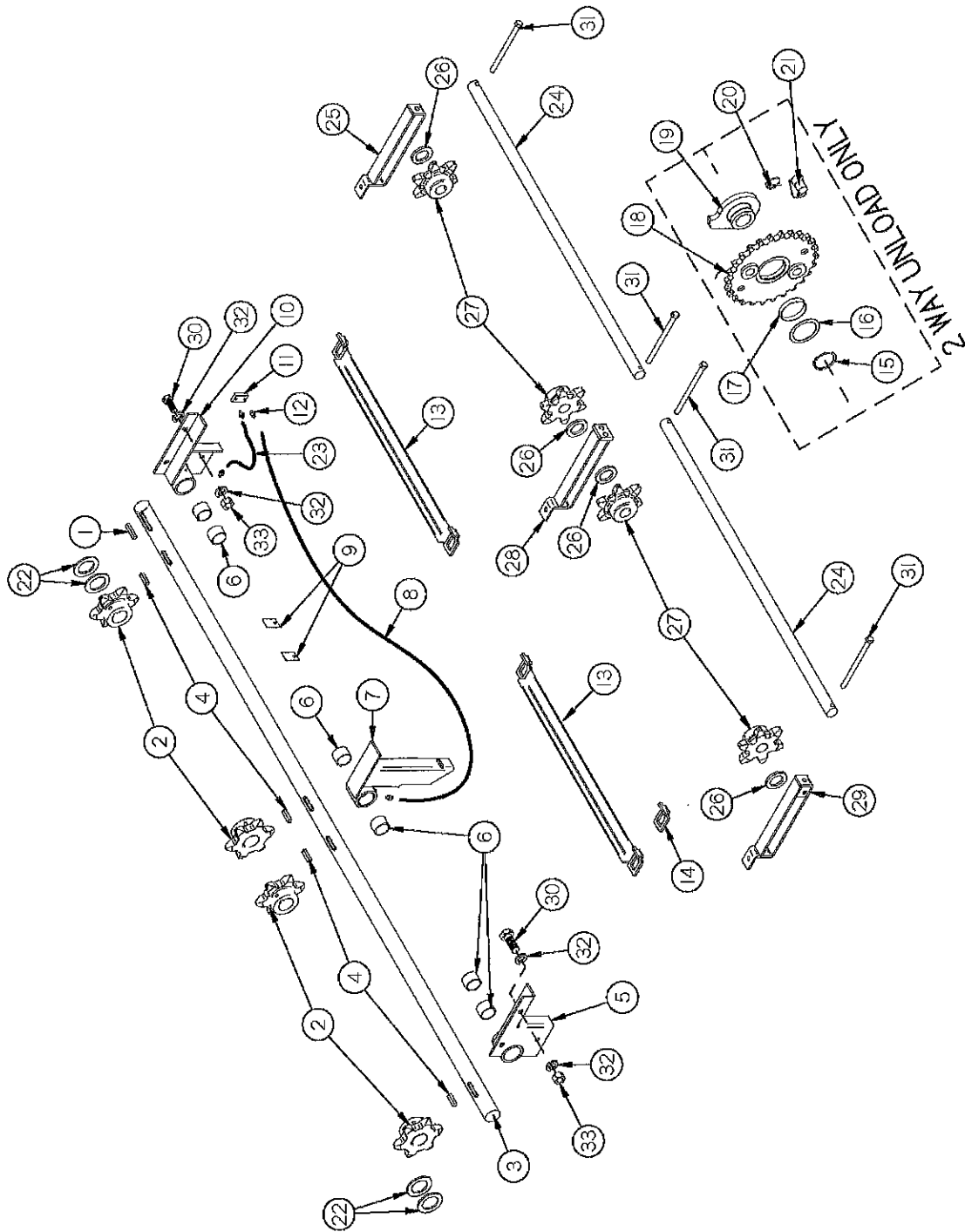


FIGURE 4

APRON DRIVE

<u>ITEM</u>	<u>QTY</u>	<u>PART #</u>	<u>DESCRIPTION</u>
1	1	SD209	3/8" X 2-3/8" SQUARE KEY (HARDENED)
2	4	SD213	APRON DRIVE SHAFT SPROCKET
3	1	SD22	DRIVE SHAFT
4	4	56N174	3/8" X 2" SQUARE KEY W/ROUND ENDS (HARDENED)
5	1	S51	LEFT DRIVE SHAFT BRACKET
6	6	S50	DRIVE SHAFT BUSHING (2" OD X 1-3/4" ID X 1.125")
7	1	S53	CENTER BEARING BRACKET
8	1	S49	GREASE LINE (LONG)
9	2	S67	GREASE LINE CLIP
10	1	S52	RIGHT DRIVE SHAFT BRACKET
11	1	S46	GREASE LINE BRACKET
12	4	S47	GREASE LINE FITTING
13	1	S233	667H PINTLE SLAT/ATTACHMENT LINKS
*	1	S54	T-ROD SLAT W/ATTACHMENT LINKS
14	1	11S50	667H PINTLE ATTACHMENT LINK (R OR L)
*	1	S55	T-ROD ATTACHMENT LINK (R OR L)

COMPLETE APRON FOR FRONT UNLOAD

*	1	S57	T-ROD APRON 14'
*	1	S230	667H PINTLE APRON 14'
*	1	S58	T-ROD APRON 16'
*	1	S231	667H PINTLE APRON 16'
*	1	S59	T-ROD APRON 18'
*	1	S32	667H PINTLE APRON 18'
*	1	S422	T-ROD APRON 20'
*	1	S432	667H PINTLE APRON 20'

NOTE: * MEANS NOT SHOWN

FIGURE 4

APRON DRIVE

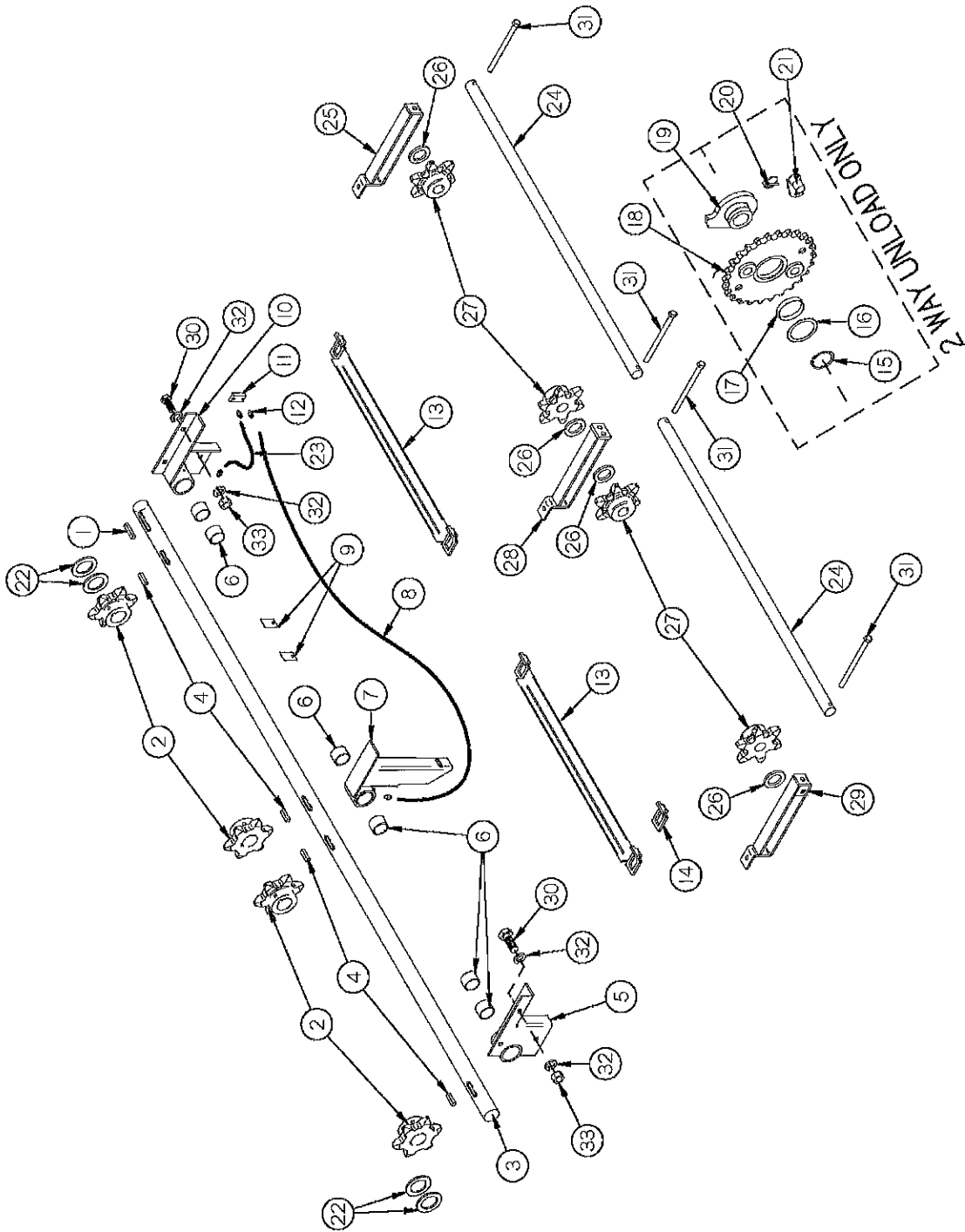


FIGURE 4

APRON DRIVE

<u>ITEM</u>	<u>QTY</u>	<u>PART #</u>	<u>DESCRIPTION</u>
15	1	SD202	SNAP RING (5100-300)
16	1	SD203	CLUTCH SPROCKET WASHER
17	1	SD204	BRONZE BUSHING (3-1/4"OD X 3"ID X 1/2")
18	1	SD23	DRIVE SHAFT SPROCKET (100-A-26)
19	1	SD205	FRONT CLUTCH DOG
20	1	PB190	LYNCH PIN
21	1	PB191	CLUTCH DOG
22	4	S36	DRIVE SHAFT SPACER
23	1	S48	GREASE LINE
24	1	S63	IDLER SHAFT
25	1	S65	RIGHT HAND REAR IDLER BRACKET
26	4	S61	IDLER SPACER
27	4	S60	IDLER SPROCKET
28	1	S64	CENTER IDLER BRACKET
29	1	S62	LEFT HAND REAR IDLER BRACKET
30	6	YBHH16045	BOLT, 1/2" X 1-1/4" GR. 5
31	4	YBHH16190	BOLT, 1/2" X 9-1/2" GR. 5
32	12	YWLO16005	WASHER, LOCK, 1/2"
33	6	YNHX16005	HEX NUT, 1/2"

COMPLETE APRON FOR FRONT & REAR UNLOAD

*	1	S324	667H PINTLE APRON 16'
*	1	S325	667H PINTLE APRON 18'
*	1	S326	667H PINTLE APRON 20'

NOTE: * MEANS NOT SHOWN

FIGURE 5
CROSS APRON DRIVE

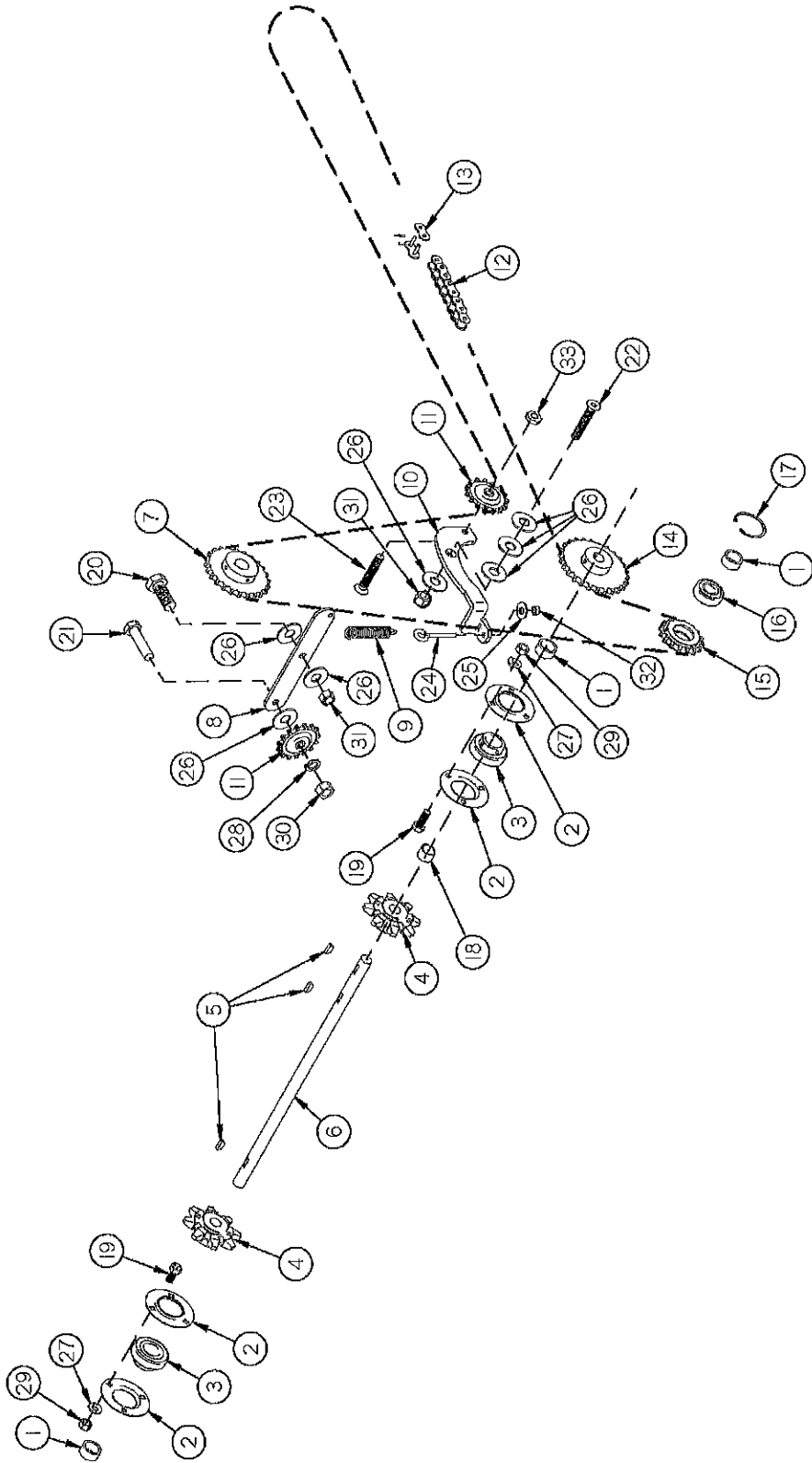


FIGURE 5

CROSS APRON DRIVE

<u>ITEM</u>	<u>QTY</u>	<u>PART #</u>	<u>DESCRIPTION</u>
1	3	4C9	LOCK COLLAR
2	4	4C7	BEARING FLANGE
3	2	4C8	BEARING
4	2	L10R24	8 TOOTH SPROCKET
5	3	5B10	1/4" X 1" WOODRUFF KEY
6	1	SD24	CROSS APRON DRIVE SHAFT
7	1	SD25	SPROCKET (60-B-24)
8	1	SD87	PRIMARY TIGHTENER BAR
9	1	ST36	SPRING
10	1	SD91	CHAIN TIGHTENER PRIMARY
11	2	12N42	15 TOOTH IDLER SPROCKET
12	1	SD26	# 60 CHAIN X 161 PITCH
13	1	D39	# 60 CONNECTOR LINK
14	1	SD27	CROSS APRON DRIVE SPROCKET (60-B-26)
15	1	SD28	IDLER SPROCKET (60-C-16)
16	1	K90	BEARING
17	1	K92	SNAP RING
18	1	SD210	APRON SPROCKET SPACER
19	6	YBHH12135	BOLT, 3/8" X 3/4" GR. 5
20	1	YBHH16045	BOLT, 1/2" X 1-1/4" GR. 5
21	1	YBHH16065	BOLT, 1/2" X 2" GR. 5
22	1	YSFS16025	FLAT HEAD SOCKET CAP SCREW, 1/2" X 2"
23	1	YSFS16035	FLAT HEAD SOCKET CAP SCREW, 1/2" X 2-1/4"
24	1	YBTE10015	TURNUED EYE BOLT, 5/16" X 2-1/2"
25	1	YWFL10005	WASHER, FLAT, 5/16" USS
26	7	YWFL16005	WASHER, FLAT, 1/2" USS
27	6	YWLO12005	WASHER, LOCK, 3/8"
28	1	YWLO16005	WASHER, LOCK, 1/2"
29	6	YNHX12005	HEX NUT, 3/8"-16
30	1	YNHX16005	HEX NUT, 1/2"
31	6	YNNY16005	HEX NUT, NYLON LOCKNUT, 1/2"
32	1	YNTL10005	HEX NUT, TOP LOCK, 5/16"-18
33	1	YNTJ16005	HEX NUT, TOP LOCK, JAM, 1/2"-13

FIGURE 6

EXTENSION

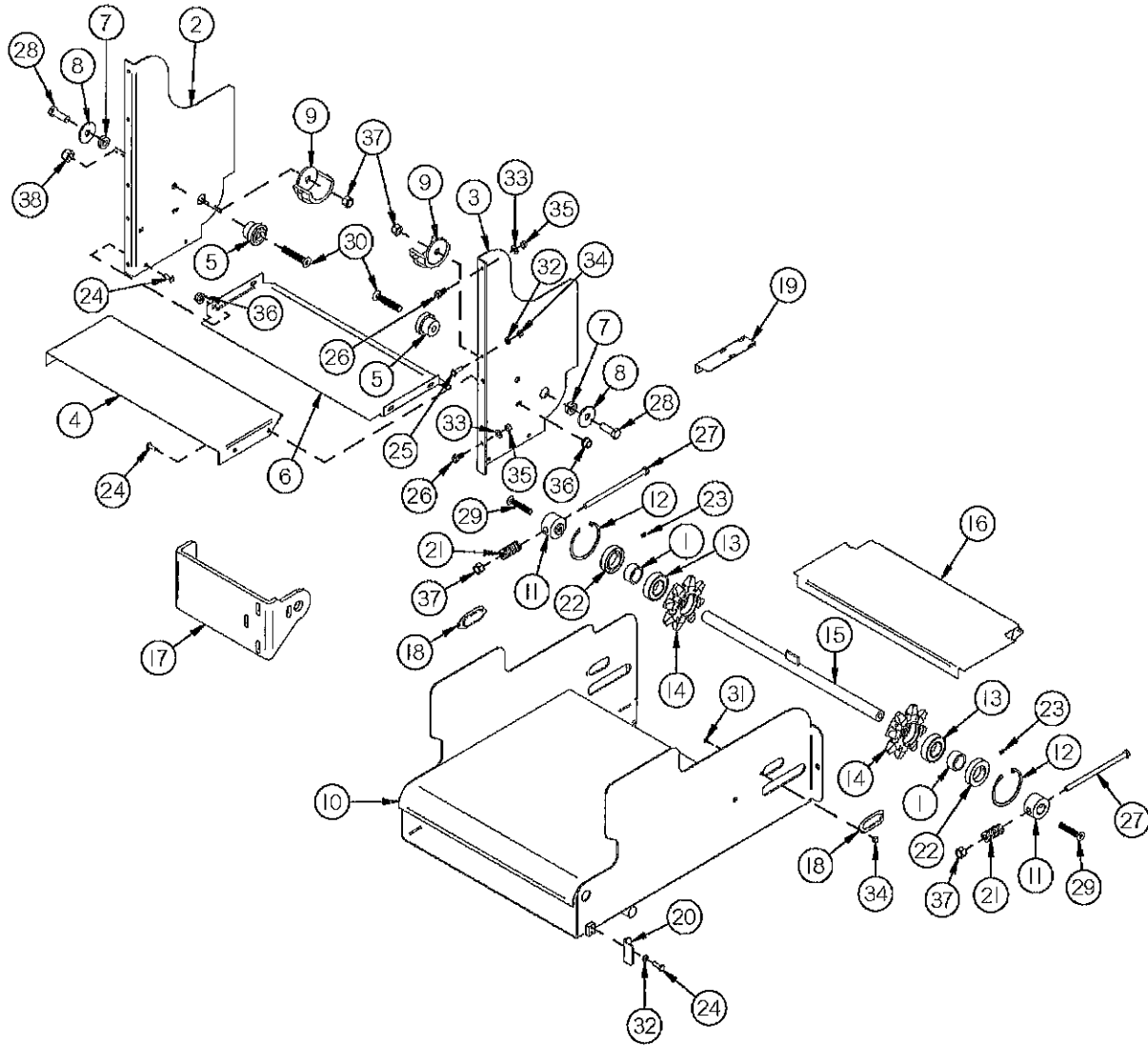


FIGURE 6

EXTENSION

<u>ITEM</u>	<u>QTY</u>	<u>PART #</u>	<u>DESCRIPTION</u>
1	2	4C9	LOCK COLLAR
2	1	SD172	EXTENSION BACK PANEL
3	1	SD173	EXTENSION FRONT PANEL
4	1	SD174	PAN EXTENSION
5	2	SD175	CHAIN ROLLER HOLDOWN
6	1	SD176	RETURN PAN EXTENSION
7	2	SD177	SHELL SPACER
8	2	S247	EXTENSION WASHER
9	2	S245	CHAIN SLIDE
10	1	SD261	EXTENSION SHELL LONG
11	2	SD313	TIGHTENER
12	2	SD262	SNAP RING (Arcon IN206)
13	2	SD263	BEARING
14	2	SD180	8 TOOTH SPROCKET
15	1	SD314	APRON IDLER SHAFT
16	1	SD182	CHAIN SLIDE
17	1	SD248	CYLINDER MOUNT TOP
18	2	SD186	COVER
19	1	SD250	LIMIT SWITCH MOUNT
20	1	SD249	LIMIT SWITCH PAD
21	2	WM210	SPRING (RED)
*	1	S89	CROSS CONVEYOR (123 LINKS)
*	1	SD306	CROSS CONVEYOR (31 LINKS)
*	1	SD311	CROSS CONVEYOR (S89 W/ SD306)
*	1	K121	CONNECTOR LINK
22	2	SD312	BEARING SHIELD
23	2	YSKP08010	SET SCREW, SOCKET, KNURLED CUP PT, 1/4"-20 X 1/2"
24	8	YBHH08015	BOLT, 1/4" X 1/2" GR. 5
25	5	YBHH08100	BOLT, 1/4" X 3/4" GR. 5
26	4	YBHH10105	BOLT, 5/16" X 3/4" GR. 5
27	2	YBHH16180	BOLT, 1/2" X 7" GR. 5
28	2	YBHH16030	BOLT, 1/2" X 1-1/2" GR. 5
29	2	YSFS16015	FLAT HEAD SOCKET CAP SCREW, 1/2" X 1-1/4"
30	2	YSFS16030	FLAT HEAD SOCKET CAP SCREW, 1/2" X 2-1/2"
31	2	YSTM08004	SLOTTED TRUSS HEAD ZINC MACHINE SCREW, 1/4"-20 x 3/4"
32	5	YWLO08005	WASHER, LOCK, 1/4"
33	4	YWLO10005	WASHER, LOCK, 5/16"
34	7	YNHX08005	HEX NUT, 1/4"-20
35	4	YNHX10005	HEX NUT, 5/16"
36	8	YNFG08005	HEX NUT, FLANGED-LOCK, 1/4"
37	6	YNNY16005	HEX NUT, NYLON LOCKNUT, 1/2"
38	2	YNTL16005	HEX NUT, TOP LOCK, 1/2"-13

NOTE: * MEANS NOT SHOWN

FIGURE 7

HYDRAULIC DRIVE

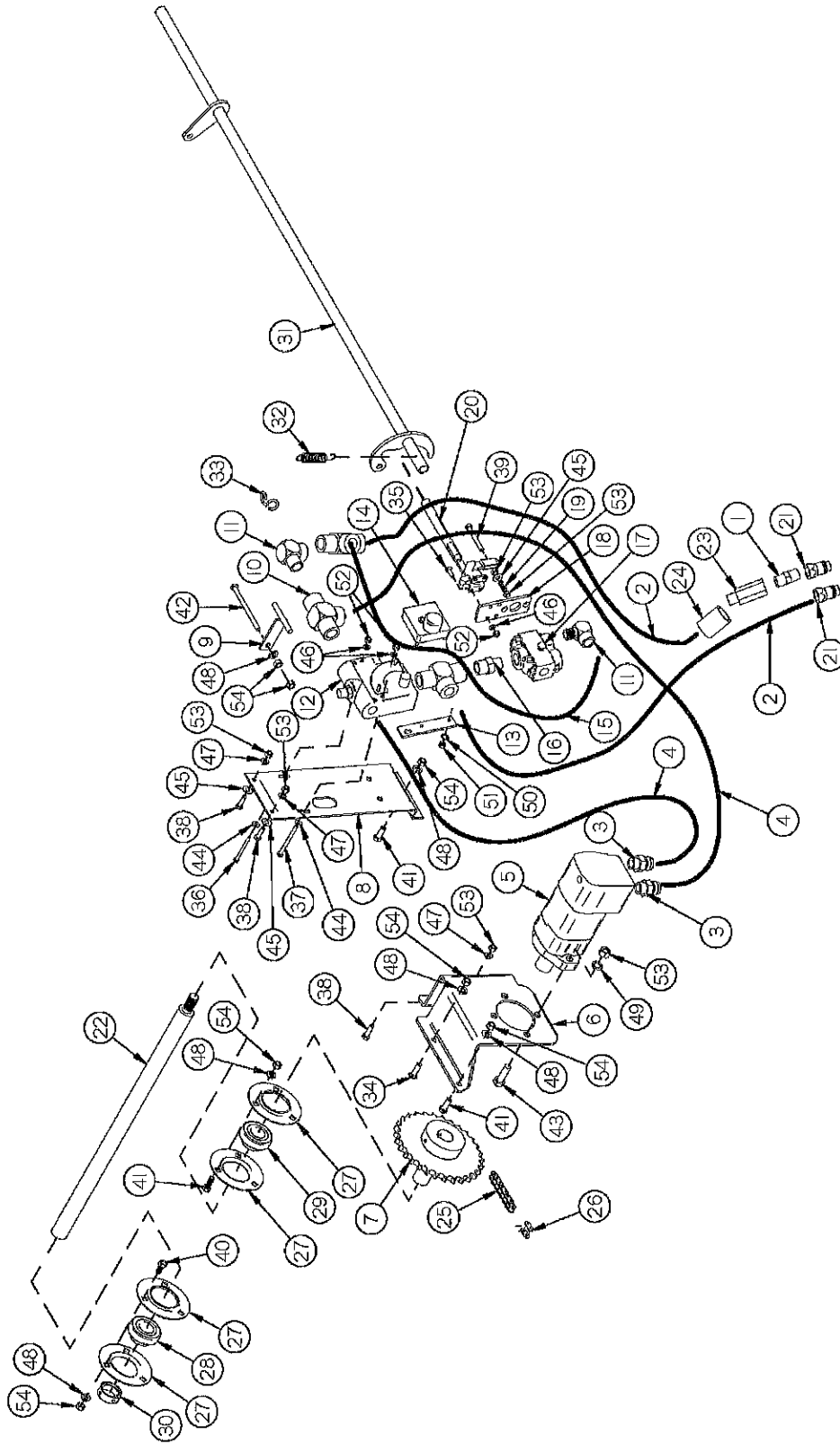


FIGURE 7

HYDRAULIC DRIVE

<u>ITEM</u>	<u>QTY</u>	<u>PART #</u>	<u>DESCRIPTION</u>
1	1	WM141	NIPPLE NUT (5404-8-8)
2	1	SD194	HYDRAULIC HOSE 150"
3	2	S461	STRAIGHT CONNECTOR (6400-12-10)
4	2	S462	HYDRAULIC HOSE 3/4" X 44"
5	1	16SV150	HYDRAULIC MOTOR
6	1	SD195	MOTOR MOUNT
7	1	SD196	MOTOR SPROCKET
8	1	SD197	FLOW CONTROL MOUNT
9	1	16SV242	POINTER
10	3	33SV71	SERVICE TEE (5602-12)
11	2	33SV72	STREET ELBOW (5502-12-12)
12	1	33SV74	FLOW CONTROL
13	1	16SV245	SPEED CONTROL MOTOR MOUNT
14	1	16SV246	GEAR MOTOR
15	1	16SV141	HYDRAULIC HOSE 1/2" X 24"
16	1	SD198	MALE PIPE COUPLING (5404-12-6)
17	1	16SV133	SELECTOR VALVE
18	1	SD199	EMERGENCY STOP VALVE MOUNT
19	1	T241	SPRING
20	1	SD200	LEVER
21	1	DWM205	MALE QUICK COUPLER
22	1	SD201	MOTOR SPROCKET SHAFT
23	1	DF18	CHECK VALVE
24	1	LW346	COUPLING (5000-8-8)
25	1	SD214	#60x 166 PITCH CHAIN
26	1	SD215	#60 CONNECTOR LINK
27	4	F14	BEARING FLANGE

FIGURE 7
HYDRAULIC DRIVE

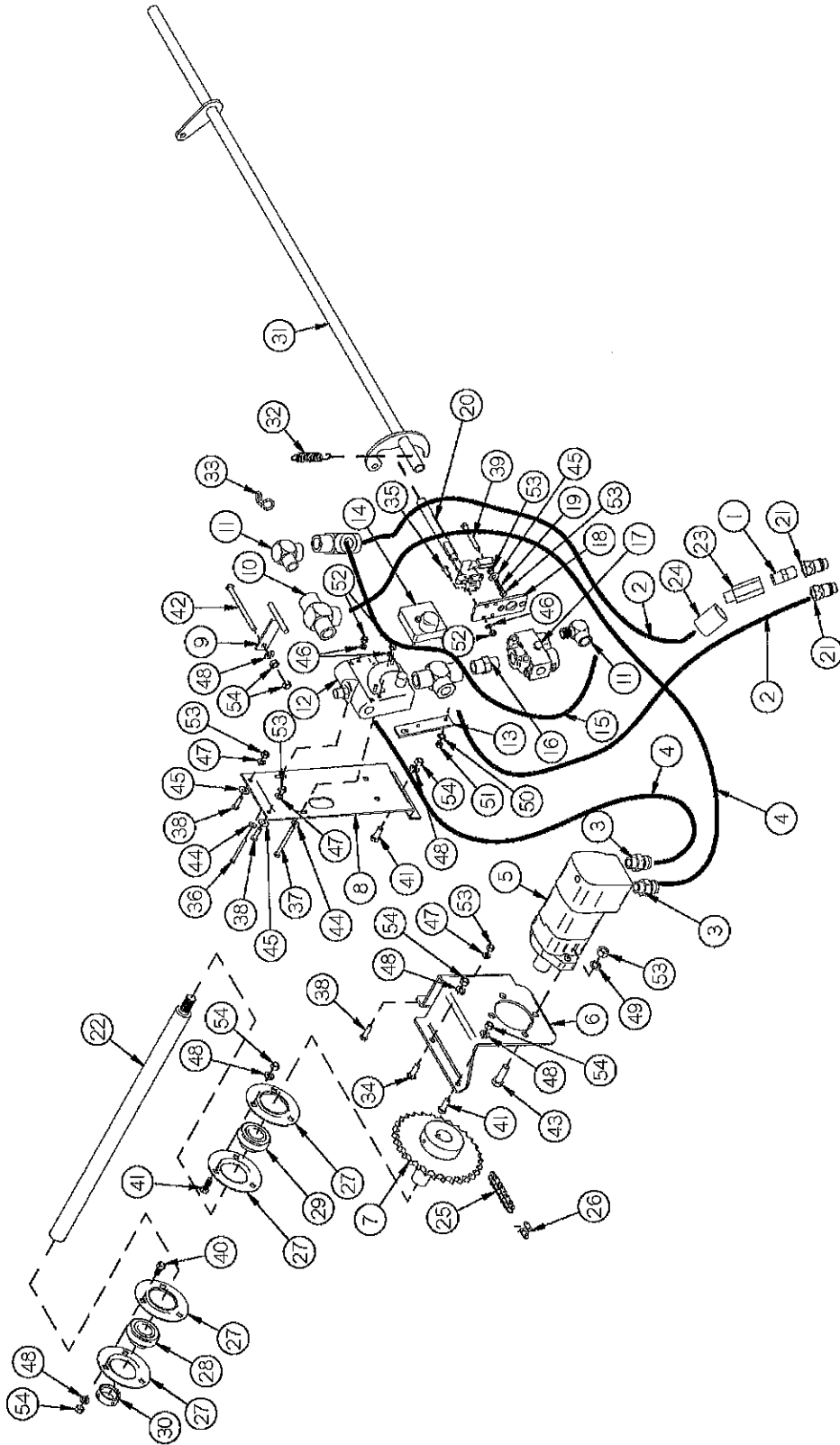


FIGURE 7

HYDRAULIC DRIVE

<u>ITEM</u>	<u>QTY</u>	<u>PART #</u>	<u>DESCRIPTION</u>
28	1	F115	BEARING (GREASABLE TYPE)
29	1	SD316	BEARING (FHS206-20G)
30	2	F16	LOCK COLLAR
31	1	SD193	SAFETY TRIP BAR
32	1	23N284	SPRING
33	1	X79	S-HOOK
34	1	YBCR12010	CARR. BOLT, 3/8" X 1" GR. 5
35	4	YBHH08100	BOLT, 1/4" X 3/4" GR. 5
36	1	YBHH08055	BOLT, 1/4" X 2-1/2" GR. 5
37	1	YBHH08114	BOLT, 1/4" X 4" GR. 5
38	3	YBHH10105	BOLT, 5/16" X 3/4" GR. 5
39	1	YBHH10097	BOLT, 5/16" X 3" GR. 5
40	3	YBHH12135	BOLT, 3/8" X 3/4" GR. 5
41	5	YBHH12010	BOLT, 3/8" X 1" GR. 5
42	1	YBHH12125	BOLT, 3/8" X 3" GR. 5 FULL THREAD
43	2	YBHH16030	BOLT, 1/2" X 1-1/2" GR. 5
44	2	YWFL08005	WASHER, FLAT, 1/4" USS
45	3	YWFL10005	WASHER, FLAT, 5/16" USS
46	6	YWLO08005	WASHER, LOCK, 1/4"
47	3	YWLO10005	WASHER, LOCK, 5/16"
48	10	YWLO12005	WASHER, LOCK, 3/8"
49	2	YWLO16005	WASHER, LOCK, 1/2"
50	2	YWST64005	STARWASHER #10
51	2	YNHX64005	HEX NUT, #10-32
52	6	YNHX08005	HEX NUT, 1/4"-20
53	5	YNHX10005	HEX NUT, 5/16"
54	10	YNHX12005	HEX NUT, 3/8"-16
55	2	YNHX16005	HEX NUT, 1/2"

FIGURE 8

BEATER CLUTCH

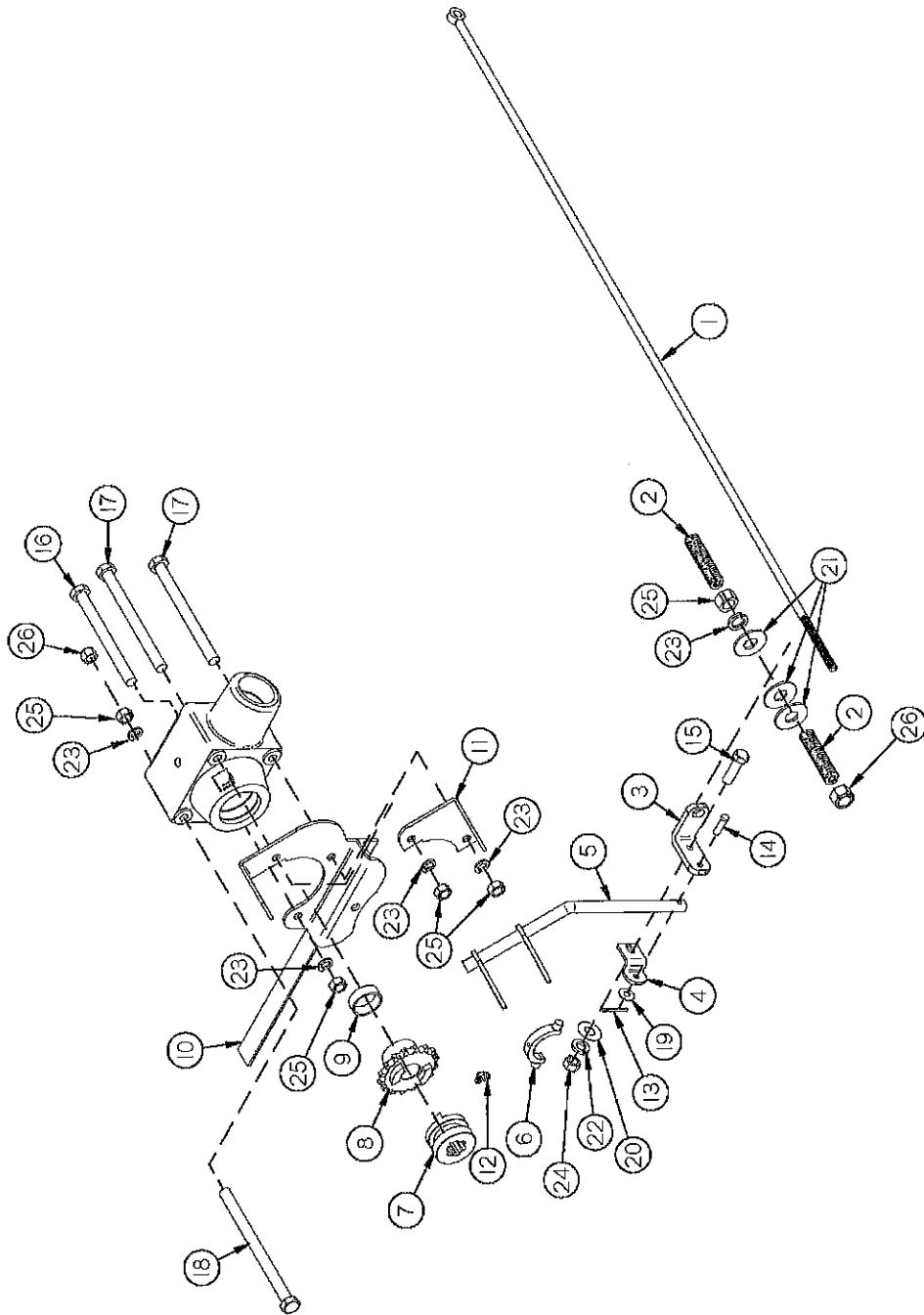


FIGURE 8

BEATER CLUTCH

<u>ITEM</u>	<u>QTY</u>	<u>PART #</u>	<u>DESCRIPTION</u>
1	1	SD38	SHIFTING ROD (BEATER)
2	2	S111	SPRING
3	1	SD94	SHIFTER FORK END
4	1	SD152	SHIFTER FORK END OFFSET
5	1	SD41	SHIFTER FORK
6	1	ST58	CLUTCH YOKE
7	1	SD45	CLUTCH (SLIDING)
8	1	SDAS26	BEATER CLUTCH SPROCKET
9	1	SD43	BUSHING (1-5/8" OD X 1-3/8" ID X 1-5/8")
10	1	SD42	CLUTCH PIVOT
11	1	SD40	SHIFTER BRACKET
12	1	HSB31	45° GREASE FITTING 1/4"-28 TAPER 13/16"
13	1	YPCT04005	COTTER PIN, 1/8" X 1"
14	1	YPCV10005	CLEVIS PIN, 5/16" X 1-3/4"
15	1	YBHH12035	BOLT, 3/8" X 1-1/4" GR. 5
16	1	YBHH16160	BOLT, 1/2" X 5-1/2" GR. 5
17	2	YBHH16165	BOLT, 1/2" X 6" GR. 5
18	1	YBHH16180	BOLT, 1/2" X 7" GR. 5
19	1	YWFL10005	WASHER, FLAT, 5/16" USS
20	1	YWFL12005	WASHER, FLAT, 3/8" USS
21	3	YWFL16005	WASHER, FLAT, 1/2" USS
22	1	YWLO12005	WASHER, LOCK, 3/8"
23	5	YWLO16005	WASHER, LOCK, 1/2"
24	1	YNHX12005	HEX NUT, 3/8"-16
25	5	YNHX16005	HEX NUT, 1/2"
26	2	YNNY16005	HEX NUT, NYLON LOCKNUT, 1/2"

FIGURE 9

APRON DRIVE



FIGURE 9

APRON DRIVE

<u>ITEM</u>	<u>QTY</u>	<u>PART #</u>	<u>DESCRIPTION</u>
1	1	SD151	FRONT PANEL BRACE
2	1	S364	SHIFTER HANDLE
3	1	S403	HANDLE LEVER GRIP (13104-019)
4	1	S360	SPEED SELECTOR PANEL
5	1	S91	FRONT SHIFTER BRACKET
6	1	S290	SHIFTER HANDLE PIPE END
7	1	S291	SPRING PIN COLLAR
8	1	S293	SPRING COLLAR
9	1	4C9	LOCK COLLAR
10	1	K92	SNAP RING
11	1	K90	BEARING
12	1	SD39	SHIFTING PIPE (APRON)
13	1	F82	CLEVIS PIN
14	1	F81	CLEVIS
15	1	SD108	5/8" CLEVIS MOUNT
16	4	SD56	PULLEY KEY (BRASS)
17	5	SD153	SNAP RING 2" (N5100-200)
18	1	SD46	ROUND HUB
19	2	SD47	VARIABLE SPEED PULLEY A
20	1	S108	VARIABLE SPEED BELT
21	2	SD58	VARIABLE SPEED PULLEY
22	2	SD93	O-RING 2" ID
23	1	SD92	SHIFTER HOLDER
24	1	SD154	SHIFTER YOKE RIGHT
25	1	SD55	SHIFTER YOKE LEFT
26	1	SD52	SHIFTING BRACKET
27	1	SD51	BEARING SPACER
28	1	SD50	BEARING (600-2RS)
29	1	SD155	CLEVIS 1/4-28
30	1	SD156	READY ROD
31	1	SD157	SPRING PIVOT
32	1	SD159	SPRING (BLUE D1110)

FIGURE 9

APRON DRIVE

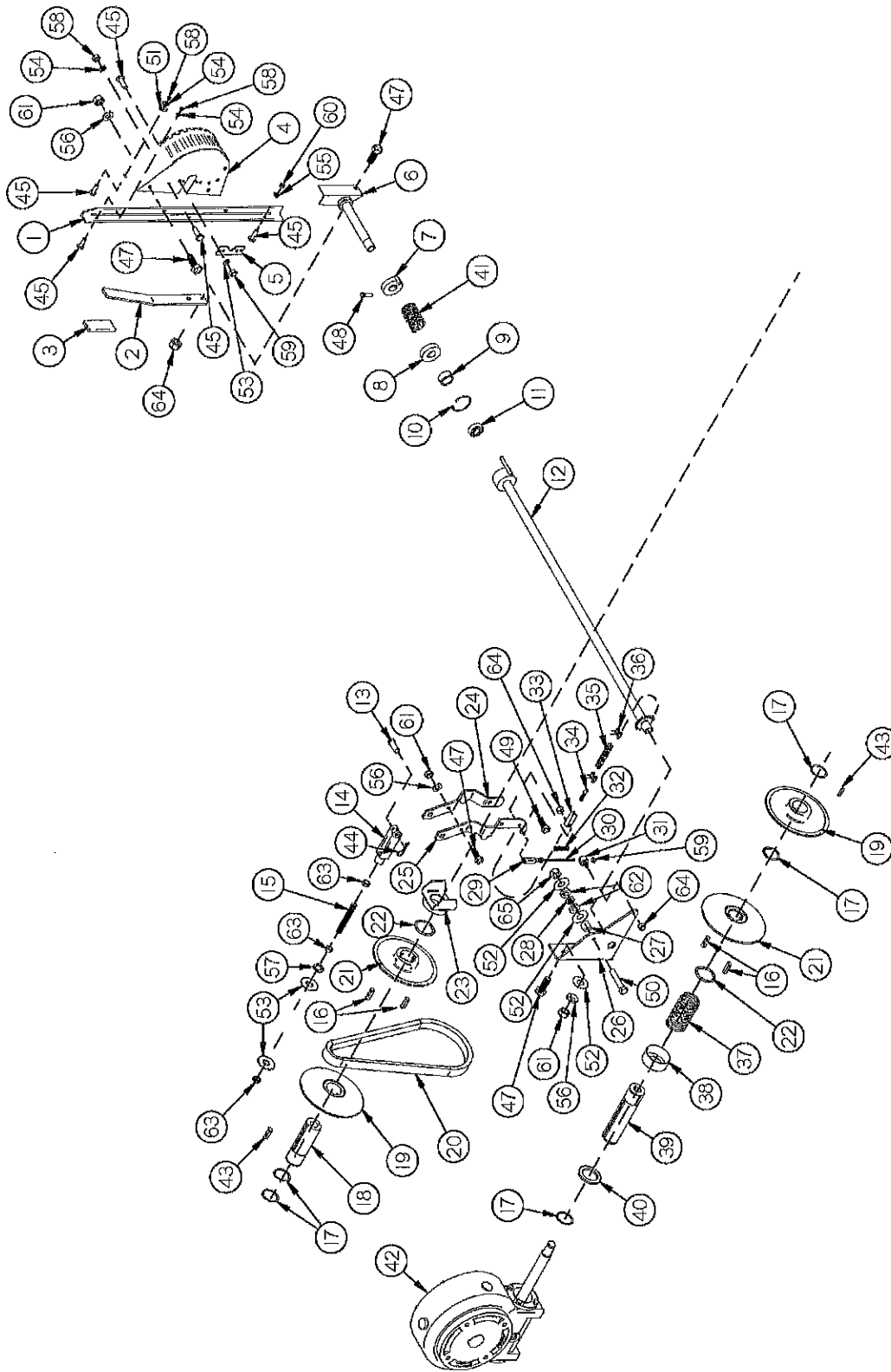


FIGURE 9

VARIABLE APRON DRIVE

<u>ITEM</u>	<u>QTY</u>	<u>PART #</u>	<u>DESCRIPTION</u>
33	1	S104	SHIFTING LINKAGE
34	1	SD160	SHIFTING LINKAGE
35	1	SD53	#40 CHAIN X 14 PITCH
36	1	S102	#40 CONNECTOR LINK
37	1	SD60	Spring (JN147394)
38	1	SD95	SPRING COVER
39	1	SD54	ROUND HUB WORM INPUT
40	1	SD110	SPRING STOP
41	1	S292	SPRING
42	1	SD140	COMPLETE GEARBOX
43	2	S135	1/4" X 1-1/4" KEY
44	1	YPHR02005	HAIR PIN, #21-05 (1-7/8" LONG, 3/8-7/16" SHAFT)
45	8	YBHH08100	BOLT, 1/4" X 3/4" GR. 5
46	1	YBHH10105	BOLT, 5/16" X 3/4" GR. 5
47	8	YBHH12010	BOLT, 3/8" X 1" GR. 5
48	1	YBHH12035	BOLT, 3/8" X 1-1/4" GR. 5
49	1	YBHH12025	BOLT, 3/8" X 1-1/2" GR. 5
50	1	YBHH12075	BOLT, 3/8" X 2" GR. 5
51	1	YWFL08005	WASHER, FLAT, 1/4" USS
52	4	YWFL12005	WASHER, FLAT, 3/8" USS
53	2	YWFL20005	WASHER, FLAT, 5/8" USS
54	8	YWLO08005	WASHER, LOCK, 1/4"
55	1	YWLO10005	WASHER, LOCK, 5/16"
56	6	YWLO12005	WASHER, LOCK, 3/8"
57	1	YWLO20005	WASHER, LOCK, 5/8"
58	8	YNHX08005	HEX NUT, 1/4"-20
59	2	YNHX08006	HEX NUT, 1/4"-28
60	1	YNHX10005	HEX NUT, 5/16"
61	6	YNHX12005	HEX NUT, 3/8"-16
62	2	YNJM12005	HEX NUT, JAM, 3/8"-16
63	3	YNJM20010	HEX NUT, JAM, 5/8"-18
64	3	YNNY12005	HEX NUT, NYLON LOCKNUT, 3/8"
65	1	YNTL12005	HEX NUT, TOP LOCK, 3/8"-16

FIGURE 10

SHIELDS

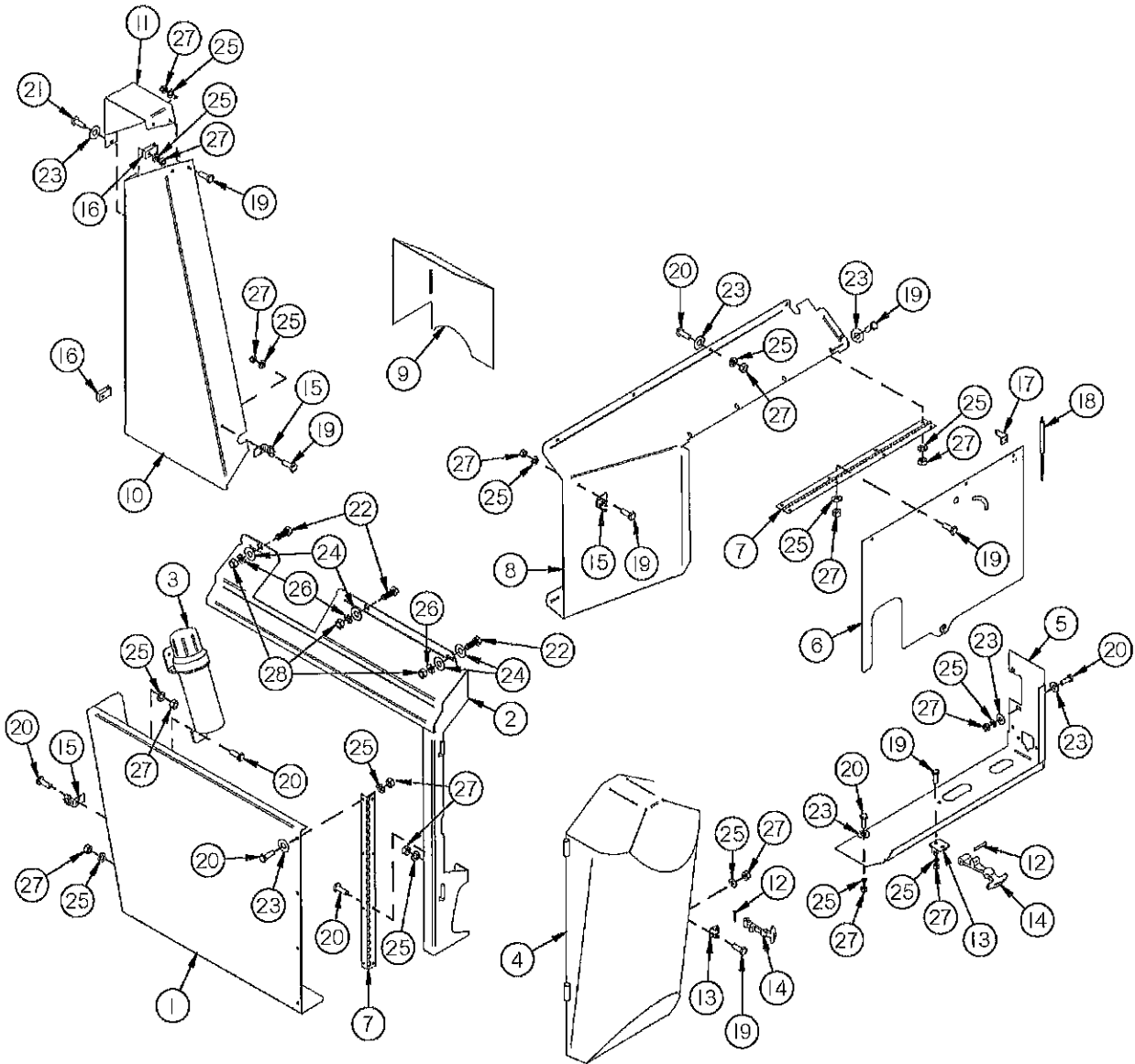


FIGURE 10

SHIELDS

<u>ITEM</u>	<u>QTY</u>	<u>PART #</u>	<u>DESCRIPTION</u>
1	1	SD106	MAIN SIDE SHIELD LOWER
2	1	SD161	HINGE BAR
3	1	S522	MANUAL HOLDER
4	1	SD162	FRONT CORNER ROUND SHIELD
5	1	SD192	FRONT SHIELD BOTTOM
6	1	SD191	FRONT SHIELD FACE
7	2	SD165	CONTINUOUS HINGE
8	1	SD166	FRONT SHIELD
9	1	SD111	GEARBOX SHIELD
10	1	SD167	SIDE SHIELD TOP
11	1	SD168	SHIELD TOP
12	2	X195	PIN
13	2	X194	LATCH MOUNTING BRACKET
14	2	X192	RUBBER LATCH
15	3	X193	LATCH CATCH BRACKET
16	2	SD169	LIFTOFF HINGE
17	1	SD189	STRUT TOP MOUNT
18	1	SD190	GAS STRUT
19	14	YBHH08015	BOLT, 1/4" X 1/2" GR. 5
20	18	YBHH08100	BOLT, 1/4" X 3/4" GR. 5
21	2	YBHH08010	BOLT, 1/4" X 1" GR. 5
22	3	YBHH12010	BOLT, 3/8" X 1" GR. 5
23	17	YWFL08005	WASHER, FLAT, 1/4" USS
24	3	YWFL12005	WASHER, FLAT, 3/8" USS
25	34	YWLO08005	WASHER, LOCK, 1/4"
26	3	YWLO12005	WASHER, LOCK, 3/8"
27	34	YNHX08005	HEX NUT, 1/4"-20
28	3	YNHX12005	HEX NUT, 3/8"-16

FIGURE 11
BEATER GEARBOX

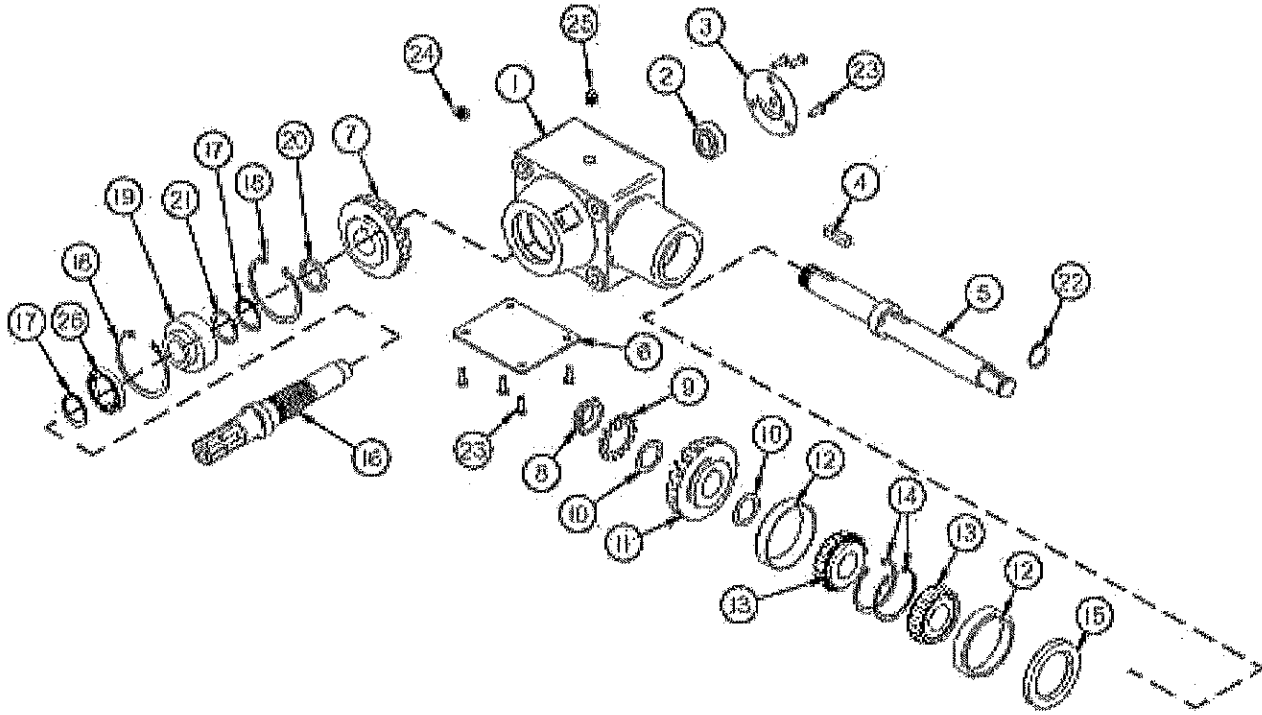


FIGURE 11

BEATER GEARBOX

<u>ITEM</u>	<u>QTY</u>	<u>PART #</u>	<u>DESCRIPTION</u>
1	1	SD69	GEARBOX HOUSING
2	1	GM259	BEARING (6205C3)
3	1	GM258	COVER
4	1	GM264	5/16" X 1" KEY
5	1	SD256	INPUT SHAFT
6	1	GM257	SIDE COVER
7	1	GM267	BEVEL GEAR (SPLINED)
8	1	GM260	BEARING LOCK NUT (N-06)
9	1	GM261	BEARING LOCK WASHER (W-06)
10	2	GM262	INPUT SHIM
11	1	GM263	BEVEL GEAR (KEYED)
12	2	3G18	RACE (15245)
13	2	SD71	BEARING (15123)
14	2	SD72	RETAINING RING (N5000-244)
15	1	SD257	SEAL (471831)
16	1	SDSH30	OUTPUT SHAFT
17	2	SD85	RETAINING RING (5100-137)
18	2	G55	RETAINING RING
19	1	SD75	BEARING (207P)
20	1	SD103	GEARBOX BEARING SPACER
21	1	SD104	GEARBOX GEAR SPACER
22	1	SD171	SNAP RING
23	7	YBHH10105	BOLT, 5/16" X 3/4" GR. 5
24	1	SD132	PLUG 1/2"-14 NPT
25	1	3G20	PLASTIC VENT PLUT
26	1	8595	SEAL
*	1	SD76	COMPLETE GEARBOX

NOTE: * MEANS NOT SHOWN

FIGURE 12
WORM GEARBOX

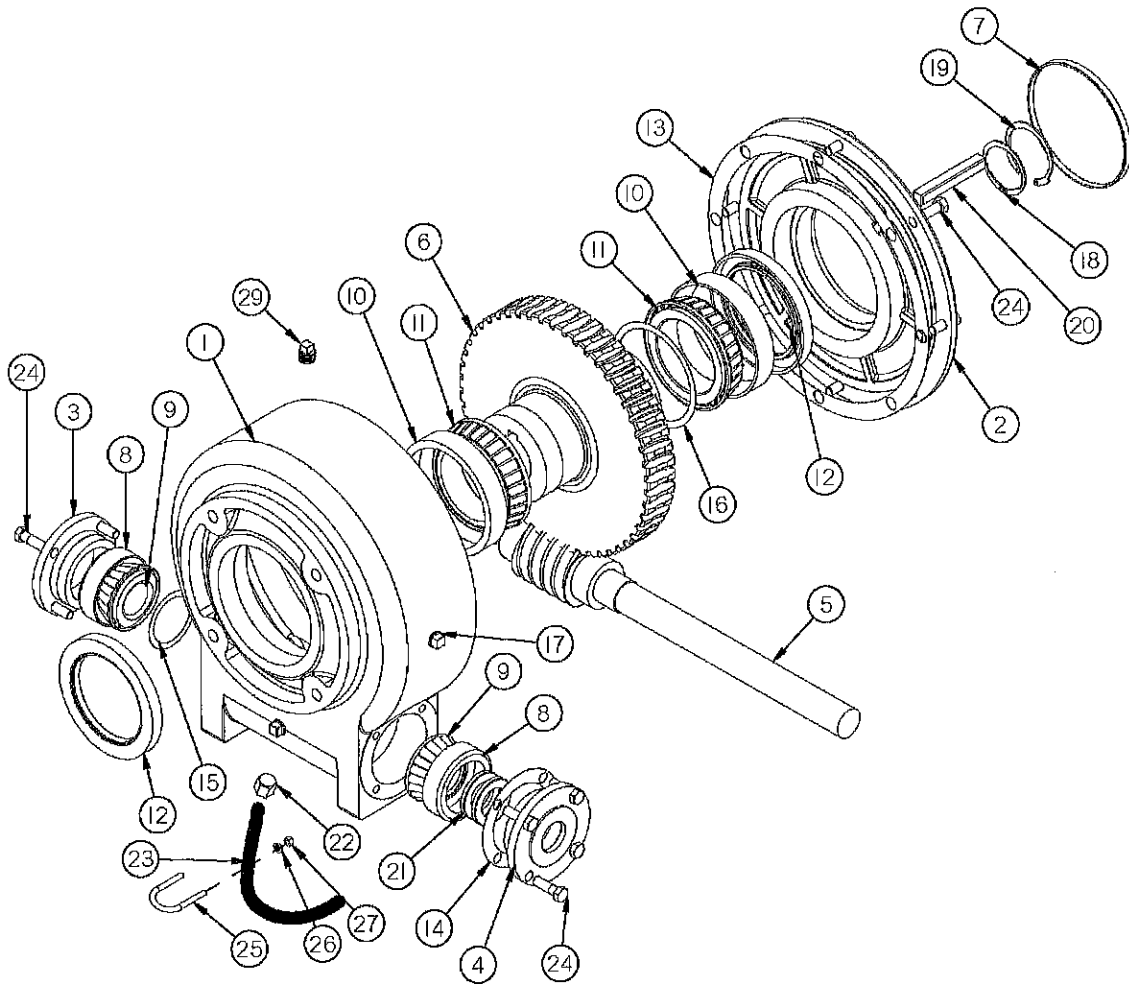


FIGURE 12

WORM GEARBOX

<u>ITEM</u>	<u>QTY</u>	<u>PART #</u>	<u>DESCRIPTION</u>
1	1	SD116	HOUSING
2	1	SD117	OUTPUT COVER
3	1	SD118	ENDCAP, SOLID
4	1	SD119	ENDCAP, THRU
5	1	SD120	INPUT WORM SHAFT
6	1	SD121	GEAR WHEEL
7	1	SD122	CAP
8	1	SD123	RACE
9	1	SD124	BEARING
10	2	SD125	RACE
11	1	SD126	BEARING
12	1	SD127	SEAL, OUTPUT
13	1	SD128	GASKET, COVER
14	1	SD129	GASKET, INPUT
15	1	SD130	INPUT SHIM
16	1	SD131	OUTPUT SHIM
17	2	SD132	PLUG 1/2"-14 NPT
18	1	SD135	RETAINING RING (5108-200)
19	1	SD136	RETAINING RING (5008-250)
20	1	SD137	KEY 1/2" SQUARE X 3-1/2"
21	1	SD138	SEAL, INPUT
22	1	SD139	CAP (5406-C-8)
23	1	SD258	FILLER HOSE 10-1/2" (1/2" MP TO 1/2" MP)
24	16	YBHH12010	BOLT, 3/8" X 1" GR. 5
25	1	YBPU08003	PIPE U BOLT, 1/4"-20 X 1/2" ZINC
26	2	YWLO08005	WASHER, LOCK, 1/4"
27	2	YNHX08005	HEX NUT, 1/4"-20
28	1	SD133	BUSHING 1/2"-14 TO 1/8"-27
29	1	SD134	VENT
*	1	SD140	COMPLETE GEARBOX

NOTE: * MEANS NOT SHOWN

FIGURE 13

BOX COMPONENTS

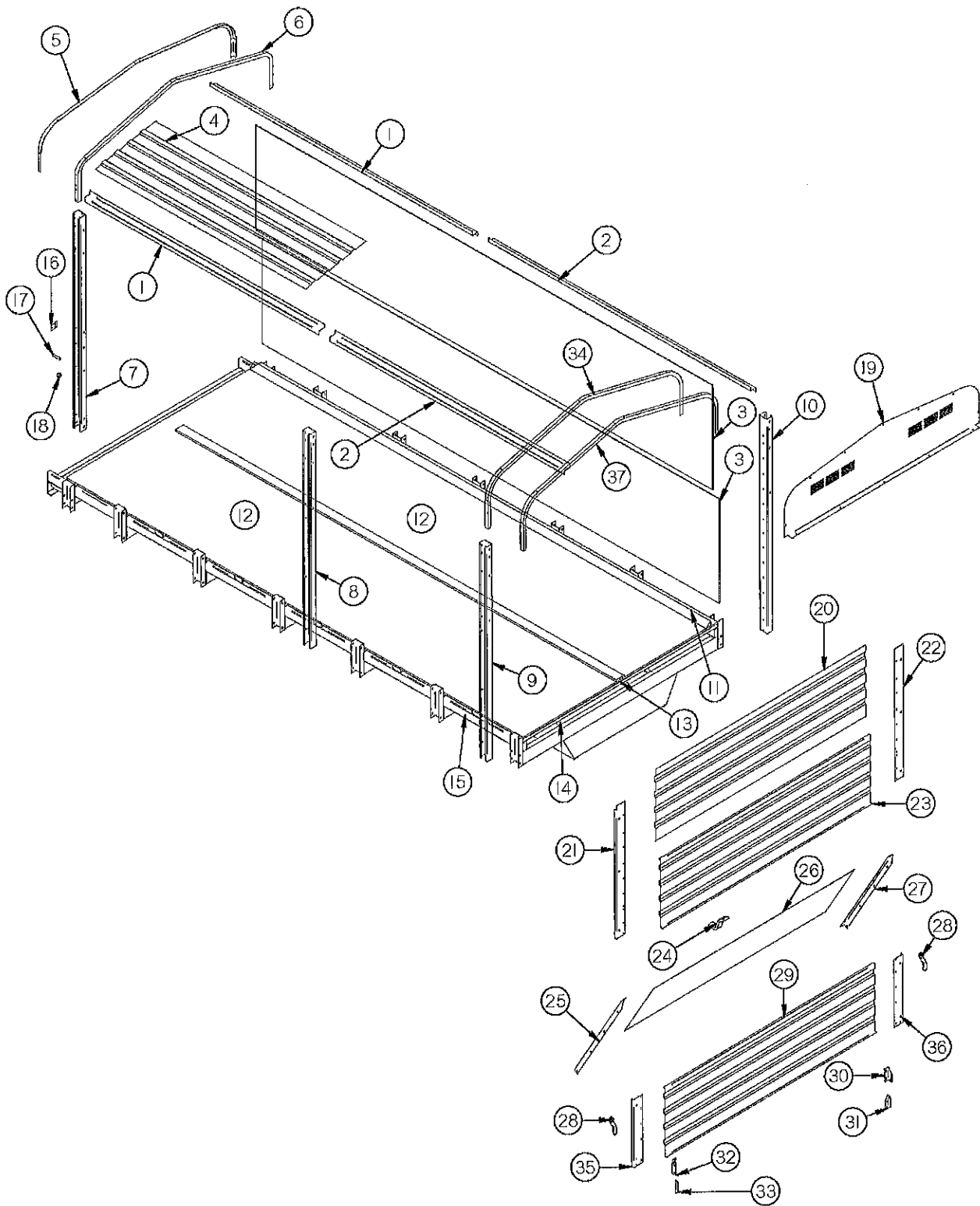


FIGURE 13

BOX COMPONENTS

<u>ITEM</u>	<u>PART #</u>	<u>DESCRIPTION</u>
1	S142	14' ROOF SILL FRONT SECTION
*	S143	16' ROOF SILL FRONT SECTION
*	S470	17' ROOF SILL FRONT SECTION
*	S144	18' ROOF SILL FRONT SECTION
*	S471	19' ROOF SILL FRONT SECTION
*	S423	20' ROOF SILL FRONT SECTION
*	S472	21' ROOF SILL FRONT SECTION
*	S502	22' ROOF SILL FRONT SECTION
2	S146	14' ROOF SILL BACK SECTION
*	S145	16' ROOF SILL BACK SECTION
*	S473	17' ROOF SILL BACK SECTION
*	S147	18' ROOF SILL BACK SECTION
*	S474	19' ROOF SILL BACK SECTION
*	S424	20' ROOF SILL BACK SECTION
*	S475	21' ROOF SILL BACK SECTION
*	S503	22' ROOF SILL BACK SECTION
3	S148	14' SIDE STEEL
*	S149	16' SIDE STEEL
*	S476	17' SIDE STEEL
*	S150	18' SIDE STEEL
*	S477	19' SIDE STEEL
*	S425	20' SIDE STEEL
*	S478	21' SIDE STEEL
*	S504	22' SIDE STEEL
4	S151	14' ROOF STEEL
*	S152	16' ROOF STEEL
*	S479	17' ROOF STEEL
*	S153	18' ROOF STEEL
*	S480	19' ROOF STEEL
*	S426	20' ROOF STEEL
*	S481	21' ROOF STEEL
*	S505	22' ROOF STEEL
5	S154	BRANCH GUARD (14' - 16')
*	ST61	BRANCH GUARD (18' - 20' - 22')
*	S482	BRANCH GUARD (17' - 19' - 21')
6	S155	ROOF SUPPORT (14' - 16')

NOTE: * MEANS NOT SHOWN

FIGURE 13 (CONT.)
BOX COMPONENTS

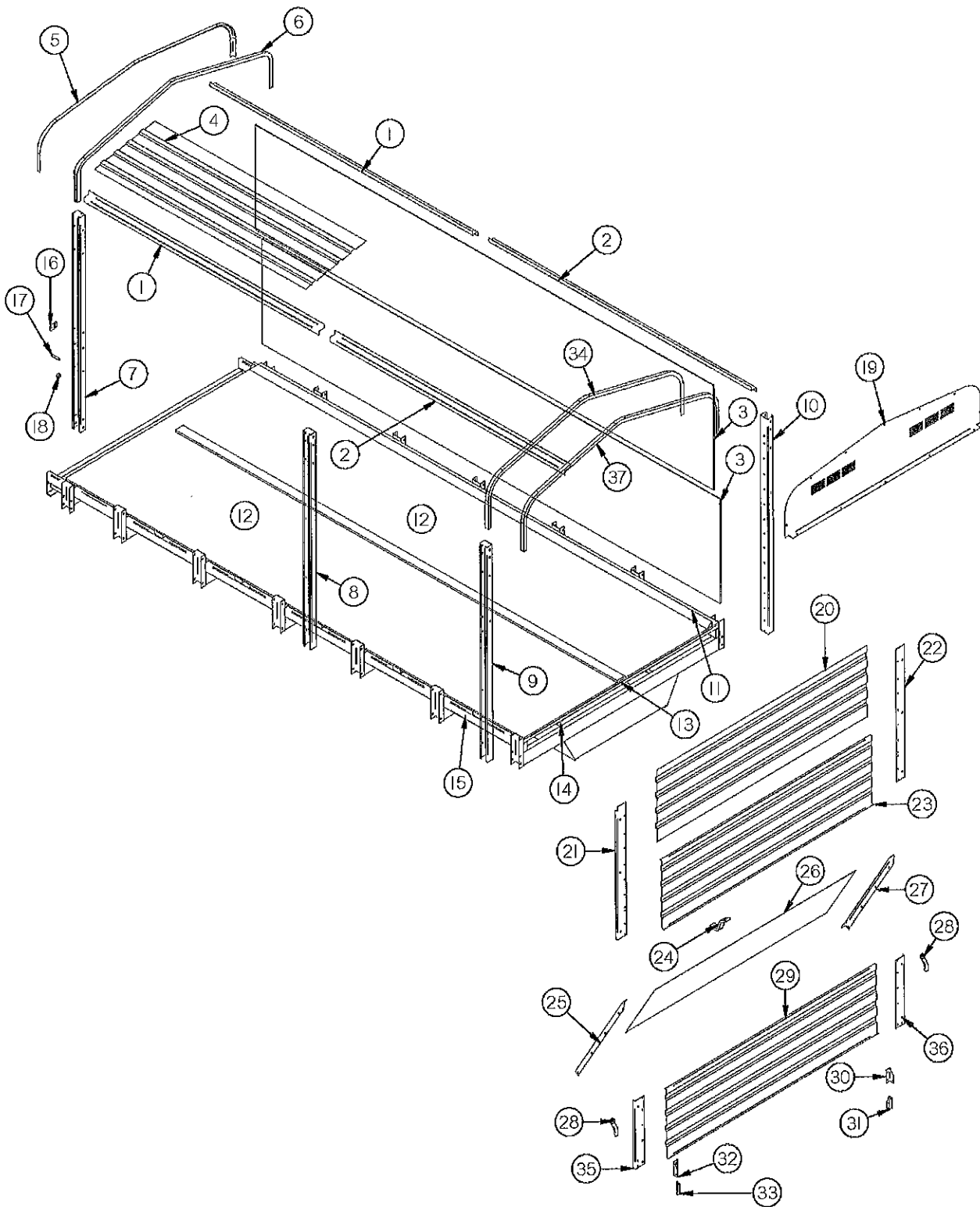


FIGURE 13 (CONT.)

BOX COMPONENTS

<u>ITEM</u>	<u>PART #</u>	<u>DESCRIPTION</u>
*	ST60	ROOF SUPPORT (18' - 20' - 22')
*	S483	ROOF SUPPORT (17' - 19' - 21')
7	ST48	FRONT STAKE (LEFT OR RIGHT)
8	ST49	SIDE STAKE (LEFT OR RIGHT)
9	ST50	BACK STAKE LEFT
10	ST51	BACK STAKE RIGHT
11	S165	14' APRON CHAIN SIDE SPACER
*	S166	16' APRON CHAIN SIDE SPACER
*	S487	17' APRON CHAIN SIDE SPACER
*	S167	18' APRON CHAIN SIDE SPACER
*	S488	19' APRON CHAIN SIDE SPACER
*	S428	20' APRON CHAIN SIDE SPACER
*	S489	21' APRON CHAIN SIDE SPACER
*	S507	22' APRON CHAIN SIDE SPACER
12	S168	14' FLOOR ASSEMBLY
*	S169	16' FLOOR ASSEMBLY
*	S490	17' FLOOR ASSEMBLY
*	S170	18' FLOOR ASSEMBLY
*	S491	19' FLOOR ASSEMBLY
*	S429	20' FLOOR ASSEMBLY
*	S492	21' FLOOR ASSEMBLY
*	S508	22' FLOOR ASSEMBLY
13	S162	14' APRON CHAIN CENTER SPACER
*	S163	16' APRON CHAIN CENTER SPACER
*	S484	17' APRON CHAIN CENTER SPACER
*	S164	18' APRON CHAIN CENTER SPACER
*	S485	19' APRON CHAIN CENTER SPACER
*	S427	20' APRON CHAIN CENTER SPACER
*	S486	21' APRON CHAIN CENTER SPACER
*	S506	22' APRON CHAIN CENTER SPACER
14	S408	14' APRON CHAIN RETURN SLIDE
*	S271	16' APRON CHAIN RETURN SLIDE
*	S493	17' APRON CHAIN RETURN SLIDE
*	S272	18' APRON CHAIN RETURN SLIDE
*	S494	19' APRON CHAIN RETURN SLIDE
*	S430	20' APRON CHAIN RETURN SLIDE
*	S495	21' APRON CHAIN RETURN SLIDE
*	S509	22' APRON CHAIN RETURN SLIDE

NOTE: * MEANS NOT SHOWN

FIGURE 13 (CONT.)
BOX COMPONENTS

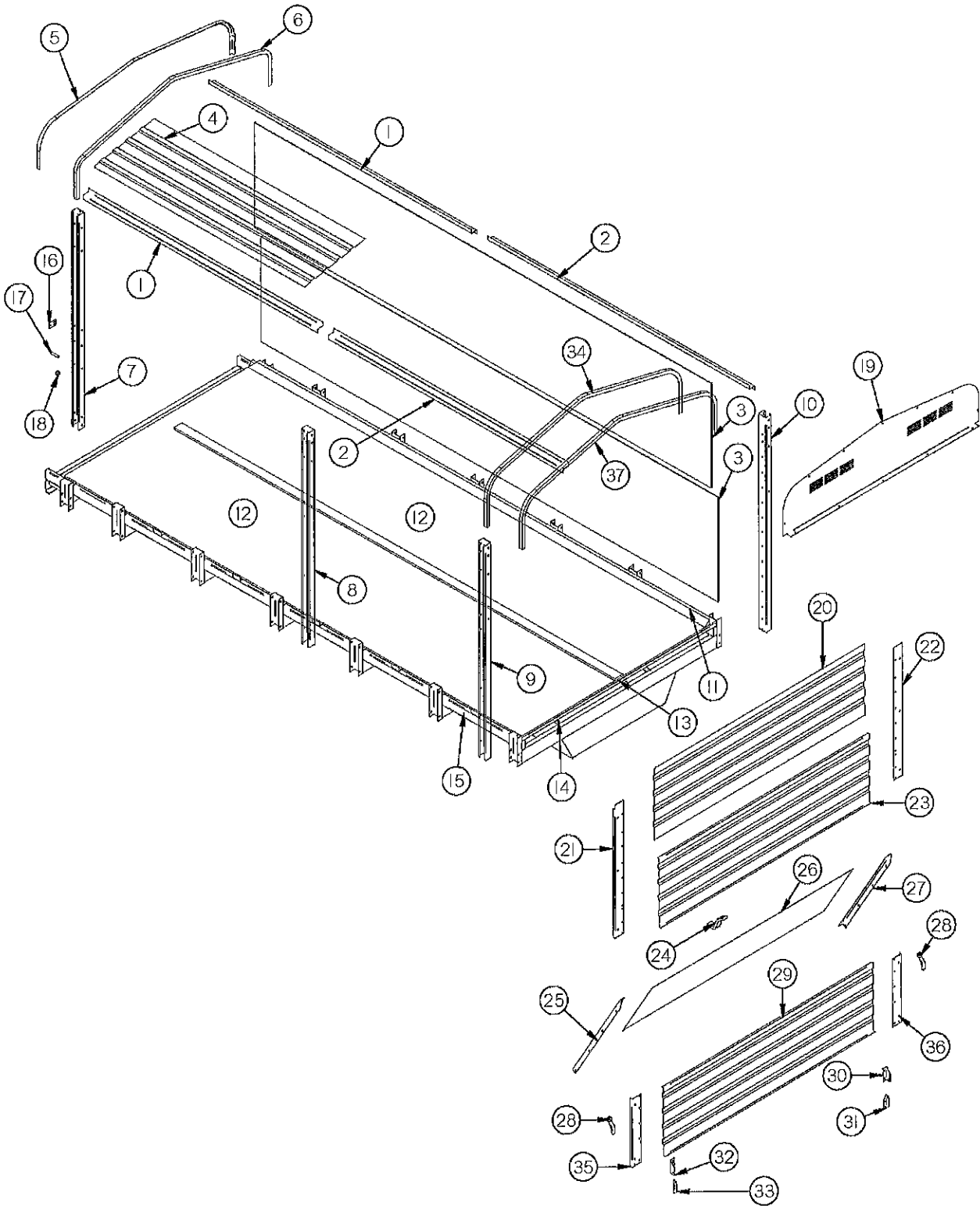


FIGURE 13 (CONT.)

BOX COMPONENTS

<u>ITEM</u>	<u>PART #</u>	<u>DESCRIPTION</u>
15	S174	14' FLOOR SUPPORT 2 X 4
*	S175	16' FLOOR SUPPORT 2 X 4
*	S496	17' FLOOR SUPPORT 2 X 4
*	S176	18' FLOOR SUPPORT 2 X 4
*	S497	19' FLOOR SUPPORT 2 X 4
*	S431	20' FLOOR SUPPORT 2 X 4
*	S498	21' FLOOR SUPPORT 2 X 4
*	S510	22' FLOOR SUPPORT 2 X 4
16	ST56	CABLE BRACKET
17	ST55	STAKE SPACER
18	ST57	PLASTIC GROMMET FOR CABLE
19	S453	BACK DOOR TOP PANEL (14' - 16')
*	S454	BACK DOOR TOP PANEL (18' - 20' - 22')
*	S499	BACK DOOR TOP PANEL (17' - 19' - 21')
20	S188	BACK DOOR UPPER STEEL
21	S190	BACK DOOR LEFT SIDE
22	S189	BACK DOOR RIGHT SIDE
23	S307	BACK DOOR CENTER STEEL
24	S191	SLANT PANEL BRACE
25	S185	SLANT PANEL ANGLE LEFT
26	S184	REAR SLANT PANEL
27	S186	SLANT PANEL ANGLE RIGHT
28	S192	HANDLE NUT
29	S197	TAILGATE STEEL
30	S199	HINGE TOP RIGHT
31	S198	HINGE BOTTOM LEFT
32	S193	HINGE TOP LEFT
33	S194	HINGE BOTTOM LEFT
34	S235	REAR ROOF SUPPORT (14' - 16')
*	S236	REAR ROOF SUPPORT (18' - 20' - 22')
*	S500	REAR ROOF SUPPORT (17' - 19' - 21')
35	S195	TAILGATE SIDE LEFT
36	S196	TAILGATE SIDE RIGHT
37	S154	REAR BRANCH GUARD (14' - 16')
*	ST61	REAR BRANCH GUARD (18' - 20' - 22')
*	S501	REAR BRANCH GUARD (17' - 19' - 21')

NOTE: * MEANS NOT SHOWN

FIGURE 14
BOX COMPONENTS FRONT & REAR

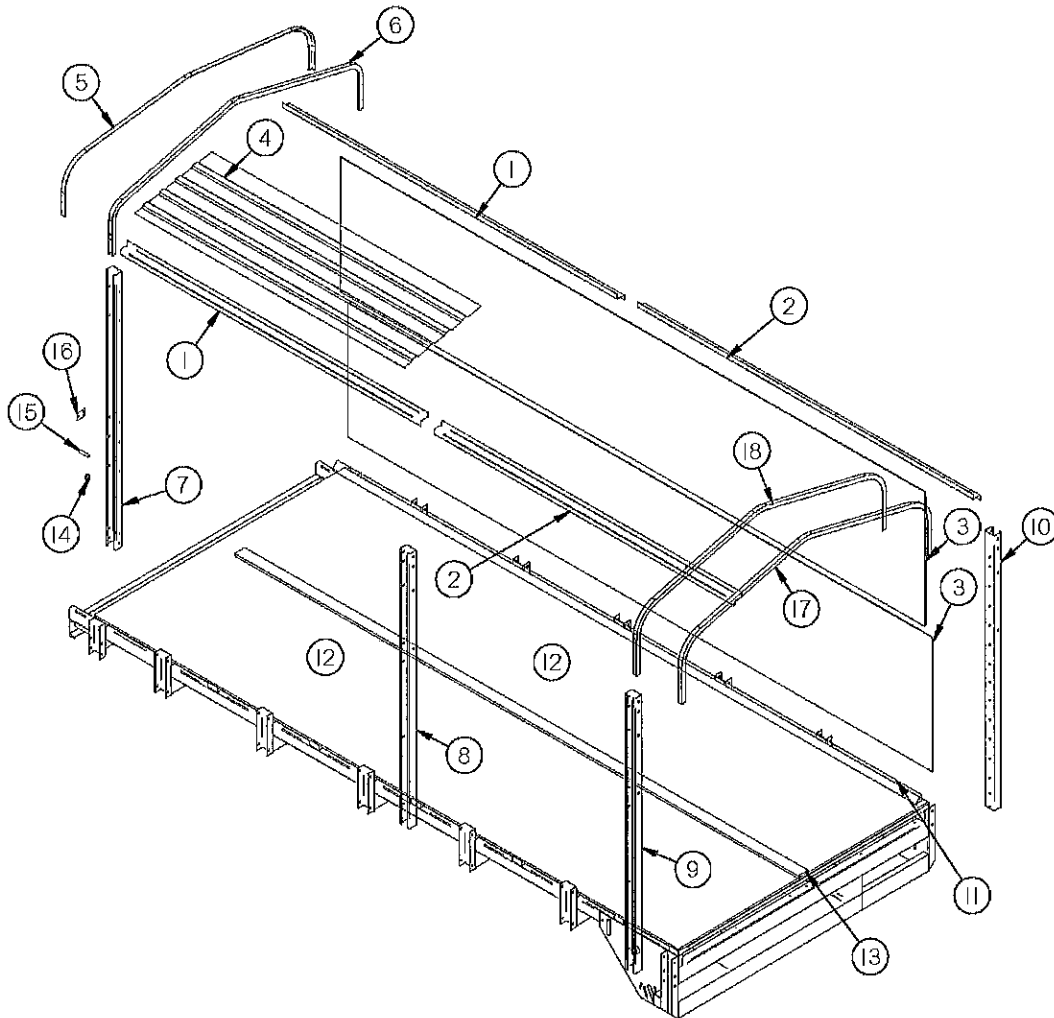


FIGURE 14

BOX COMPONENTS FRONT & REAR

<u>ITEM</u>	<u>PART #</u>	<u>DESCRIPTION</u>
1	S146	16' ROOF SILL FRONT SECTION
*	S470	17' ROOF SILL FRONT SECTION
*	S147	18' ROOF SILL FRONT SECTION
*	S471	19' ROOF SILL FRONT SECTION
*	S297	20' ROOF SILL FRONT SECTION
*	S472	21' ROOF SILL FRONT SECTION
*	S502	22' ROOF SILL FRONT SECTION
2	S143	16' ROOF SILL BACK SECTION
*	S473	17' ROOF SILL BACK SECTION
*	S144	18' ROOF SILL BACK SECTION
*	S474	19' ROOF SILL BACK SECTION
*	S298	20' ROOF SILL BACK SECTION
*	S475	21' ROOF SILL BACK SECTION
*	S503	22' ROOF SILL BACK SECTION
3	S149	16' SIDE STEEL
*	S476	17' SIDE STEEL
*	S150	18' SIDE STEEL
*	S477	19' SIDE STEEL
*	S299	20' SIDE STEEL
*	S478	21' SIDE STEEL
*	S504	22' SIDE STEEL
4	S152	16' ROOF STEEL
*	S479	17' ROOF STEEL
*	S153	18' ROOF STEEL
*	S480	19' ROOF STEEL
*	S300	20' ROOF STEEL
*	S481	21' ROOF STEEL
*	S505	22' ROOF STEEL
5	ST61	FRONT BRANCH GUARD (16' - 18' - 20')
*	S482	FRONT BRANCH GUARD (17' - 19' - 21')
6	ST60	ROOF SUPPORT (16' - 18' - 20')
*	S483	ROOF SUPPORT (17' - 19' - 21')

NOTE: * MEANS NOT SHOWN

FIGURE 14
BOX COMPONENTS FRONT & REAR

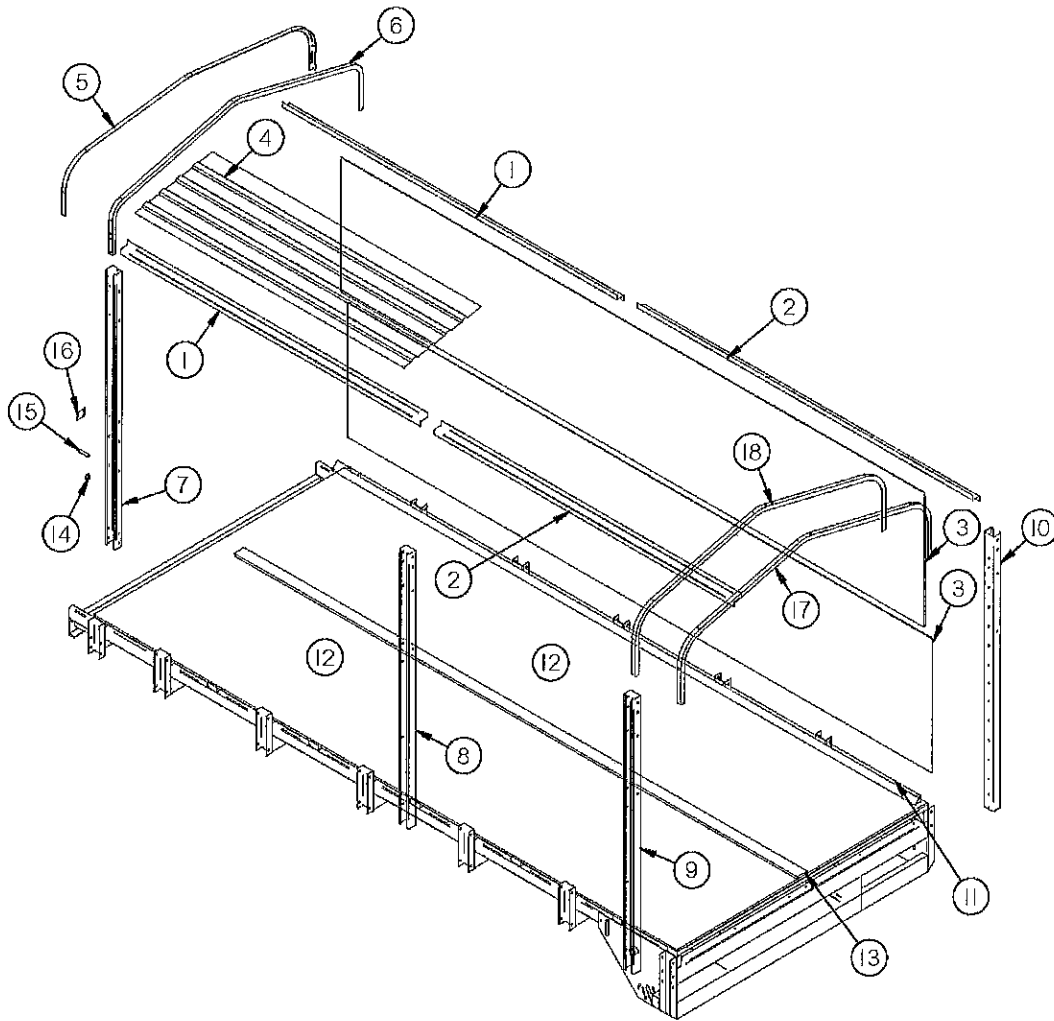


FIGURE 14

BOX COMPONENTS FRONT & REAR

<u>ITEM</u>	<u>PART #</u>	<u>DESCRIPTION</u>
7	ST48	FRONT STAKE (LEFT OF RIGHT)
8	ST49	SIDE STAKE (LEFT OR RIGHT)
9	PB140	BACK STAKE LEFT
10	PB68	BACK STAKE RIGHT
11	S514	16' APRON CHAIN SIDE SPACER
*	S164	17' APRON CHAIN SIDE SPACER
*	S515	18' APRON CHAIN SIDE SPACER
*	S427	19' APRON CHAIN SIDE SPACER
*	S301	20' APRON CHAIN SIDE SPACER
*	S506	21' APRON CHAIN SIDE SPACER
*	S511	22' APRON CHAIN SIDE SPACER
12	S518	16' FLOOR ASSEMBLY
*	S170	17' FLOOR ASSEMBLY
*	S519	18' FLOOR ASSEMBLY
*	S429	19' FLOOR ASSEMBLY
*	S303	20' FLOOR ASSEMBLY
*	S508	21' FLOOR ASSEMBLY
*	S513	22' FLOOR ASSEMBLY
13	S163	16' APRON CHAIN CENTER SPACER
*	S484	17' APRON CHAIN CENTER SPACER
*	S164	18' APRON CHAIN CENTER SPACER
*	S485	19' APRON CHAIN CENTER SPACER
*	S427	20' APRON CHAIN CENTER SPACER
*	S486	21' APRON CHAIN CENTER SPACER
*	S506	22' APRON CHAIN CENTER SPACER
14	ST57	PLASTIC GROMMET FOR CABLE
15	ST55	STAKE SPACER
16	ST56	CABLE BRACKET
17	S520	REAR BRANCH GUARD (16' - 18' - 20')
*	S501	REAR BRANCH GUARD (17' - 19' - 21')
18	S236	REAR ROOF SUPPORT (16' - 18' - 20')
*	S500	REAR ROOF SUPPORT (17' - 19' - 21')

NOTE: * MEANS NOT SHOWN

FIGURE 15

REAR UNLOAD ASSEMBLY

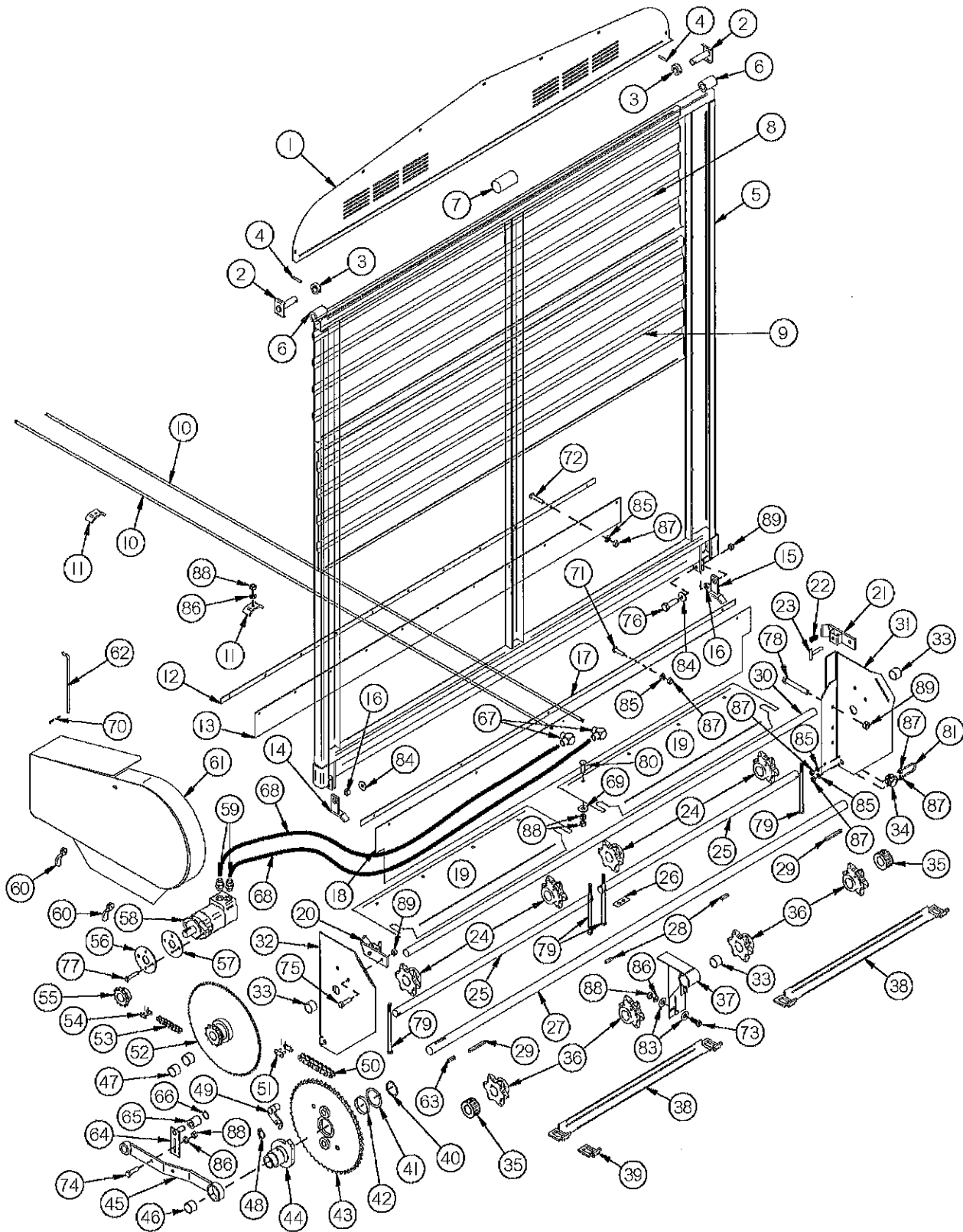


FIGURE 15

REAR UNLOAD ASSEMBLY

<u>ITEM</u>	<u>QTY</u>	<u>PART #</u>	<u>DESCRIPTION</u>
1	1	PB72	BACK DOOR TOP PANEL
2	2	PB129	HINGE PIN
3	2	PB130	COLLAR
4	2	3G22	EXPANSION PIN
5	1	PB73	BACK DOOR FRAMEWORK
6	2	PB65	HINGE
7	1	PB66	GUARD
8	1	PB23	BACK DOOR TOP STEEL
9	1	PB24	BACK DOOR BOTTOM STEEL
10	2	PB102	HYDRAULIC PIPE 20'
11	7	23N67	HOSE HOLDER
12	1	S288	SEAL STRAP
13	1	PB54	RUBBER SEAL
14	1	PB58	LATCH BRACKET LEFT
15	1	PB57	LATCH BRACKET RIGHT
16	2	PB61	LATCH PIVOT
17	1	PB103	POLY SHIELD STRAP
18	1	PB104	POLY SHIELD
19	2	IFB56	DRIVE SHAFT PANEL
20	1	IFB58	REAR DOOR LOCK LATCH LEFT
21	1	IFB57	REAR DOOR LOCK LATCH RIGHT
22	2	IFB110	DOOR LATCH SPRING
23	2	IFB109	DOOR LATCH PIN
24	4	S60	IDLER SHAFT SPROCKET (8 PCS.)
25	2	PB89	TIGHTENER SHAFT
26	1	PB196	LOCK TAB
27	1	PB253	DRIVE SHAFT
28	2	PB87	KEY 3/8" X 2" SQUARE
29	2	PB133	KEY 3/8" X 4-3/8" SQUARE
30	1	PB90	INSIDE IDLER SHAFT
31	1	PB257	DRIVE SHAFT MOUNT RIGHT
32	1	PB256	DRIVE SHAFT MOUNT LEFT
33	3	S50	BUSHING 1-3/4"OD X 1-1/2" ID X 2-1/2"
34	1	F33	CABLE GUIDE
35	2	PB83	LATCH SPROCKET
36	4	SD213	DRIVE SHAFT SPROCKET
37	1	PB258	CENTER BEARING BRACKET
38	1	S233	667XH PINTLE SLAT WITH ATTACHMENT LINKS
*	1	11S50	667XH PINTLE ATTACHMENT LINK RH OR LH
*	1	S326	667XH COMPLETE PINTLE APRON 20'
39	1	11S51	667XH PINTLE CONNECTOR LINK
40	1	23N227	SNAP RING
41	1	PB126	CLUTCH SPROCKET WASHER
42	1	PB135	BUSHING
43	1	PB193	52 TOOTH SPROCKET
44	1	PB252	REAR CLUTCH DOG
45	1	PB251	DRIVE SHAFT BRACE
46	1	PB134	BUSHING 2-1/2" OD X 2-1/4" ID X 1" Long

NOTE: * MEANS NOT SHOWN

FIGURE 15

REAR UNLOAD ASSEMBLY

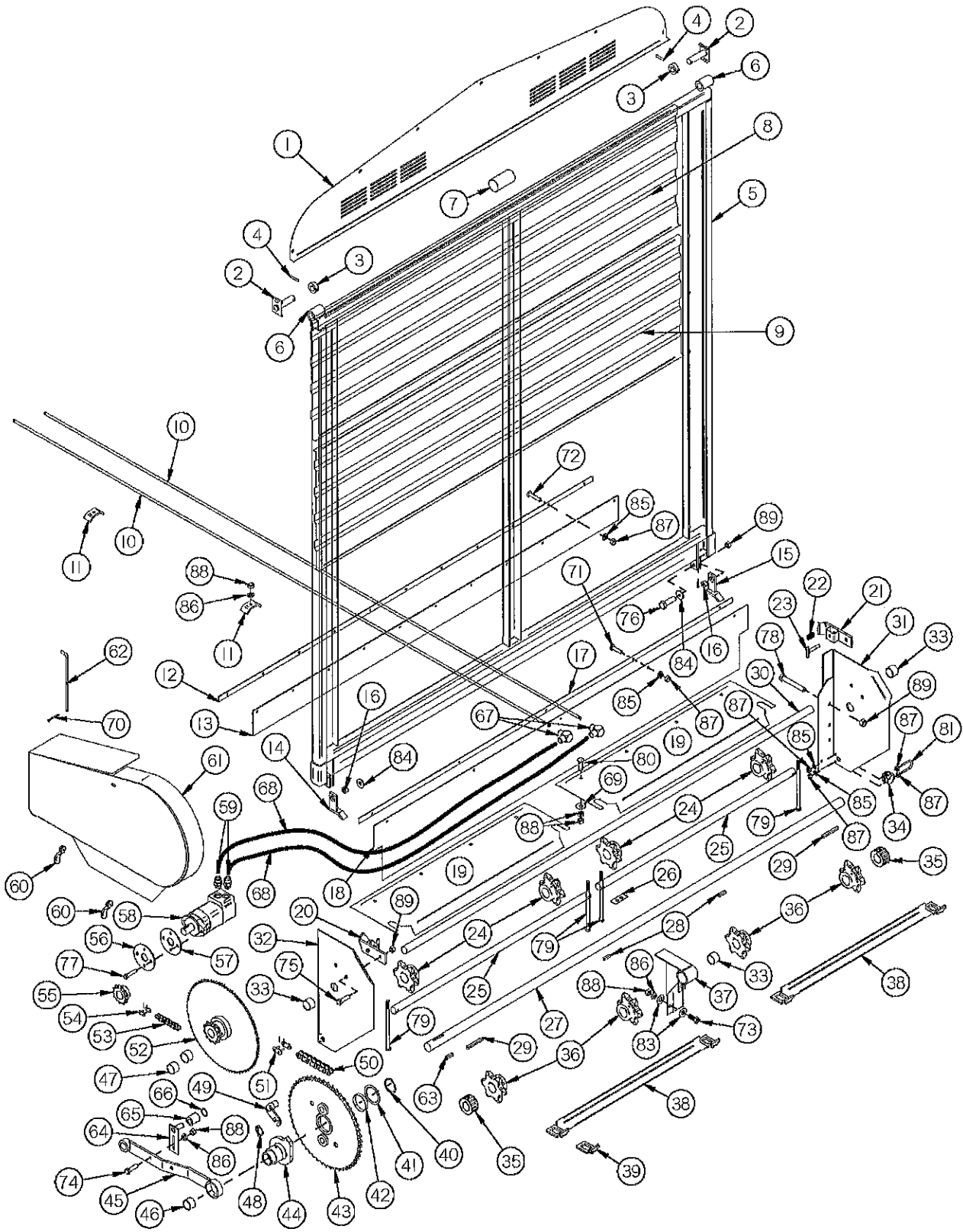


FIGURE 15

REAR UNLOAD ASSEMBLY

<u>ITEM</u>	<u>QTY</u>	<u>PART #</u>	<u>DESCRIPTION</u>
47	2	PB108	BUSHING 1-1/2" OD X 1-1/4" ID X 1-3/4"
48	1	PB190	LYNCH PIN
49	1	PB191	CLUTCH PIN
50	1	PB114	#80 CHAIN 73 PITCHES
51	1	F157	#80 CONNECTOR LINK
52	1	PB95	11 TOOTH TO 84 TOOTH SPROCKET
53	1	SD292	#50 CHAIN 96 PITCHES
54	1	X61	#50 CONNECTOR LINK
55	1	PB235	SPROCKET 2000 SERIES
56	1	PB260	HYDRAULIC MOTOR MOUNT WASHER
57	1	PB259	HYDRAULIC MOTOR MOUNT SPACER
58	1	16SV150	HYDRUALIC MOTOR
59	2	GM27	STRAIGHT THREAD CONNECTOR (8-10F5OX)
60	2	S192	HANDLE NUT
61	1	PB138	REAR SHAFT SHIELD
62	1	PB100	HINGE PIN
63	1	56N174	3/8" X 2" SQUARE KEY W/ROUND ENDS (HARDENED)
64	1	17G69	CHAIN TIGHTENER BRACKET
65	1	23N238	CHAIN TIGHTENER ROLLER
66	1	10R32	SNAP RING
67	2	50N135	1/2"-90° ELBOW (FEMALE)
68	2	SD2308	HYDRAULIC HOSE 1/2" X 60" (139HY-8-8, 1/2MPX)
69	8	S304	TIGHTENER WASHER
70	1	YPCT05015	COTTER PIN, 5/32" X 1-1/4"
71	5	YBHH08010	BOLT, 1/4" X 1" GR. 5
72	11	YBHH08035	BOLT, 1/4" X 1-1/4" GR. 5
73	1	YBHH12010	BOLT, 3/8" X 1" GR. 5
74	2	YBHH12035	BOLT, 3/8" X 1-1/4" GR. 5
75	2	YBHH16045	BOLT, 1/2" X 1-1/4" GR. 5
76	2	YBHH16030	BOLT, 1/2" X 1-1/2" GR. 5
77	2	YBHH16095	BOLT, 1/2" X 2-1/4" GR. 5
78	6	YBHH16115	BOLT, 1/2" X 3-1/2" GR. 5
79	4	YBHH16190	BOLT, 1/2" X 9-1/2" GR. 5
80	8	YBCR12015	CARR. BOLT, 3/8" X 1-1/2" GR. 5
81	1	YBPU08005	PIPE U BOLT, 1/4"-20 X 3/4" PIPE, 1-1/4" ID, 2-1/4" IL, 1-1/4" THREAD
82	5	YWFL08005	WASHER, FLAT, 1/4" USS
83	2	YWFL12005	WASHER, FLAT, 3/8" USS
84	2	YWFL16005	WASHER, FLAT, 1/2" USS
85	18	YWLO08005	WASHER, LOCK, 1/4"
86	10	YWLO12005	WASHER, LOCK, 3/8"
87	20	YNHX08005	HEX NUT, 1/4"-20
88	26	YNHX12005	HEX NUT, 3/8"-16
89	10	YNRL16005	HEX NUT, REVERSIBLE-SIDE LOCK, 1/2"-13

FIGURE 16
4TH BEATER OPTION

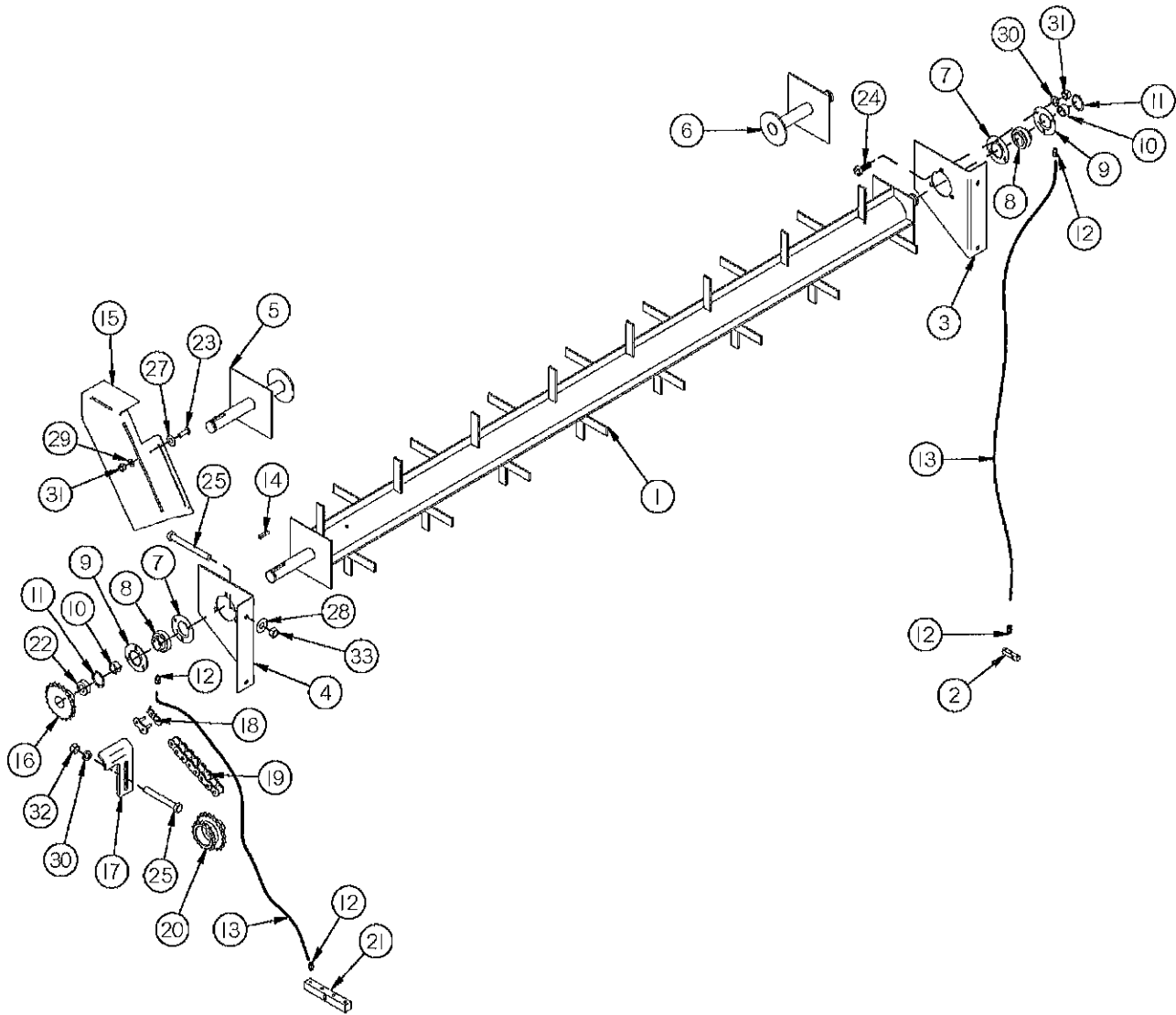


FIGURE 16

4TH BEATER OPTION

<u>ITEM</u>	<u>QTY</u>	<u>PART #</u>	<u>DESCRIPTION</u>
1	1	S263	BEATER
2	1	SD83	GREASE BLOCK (3 PORT)
3	1	S264	LEFT HAND BEATER PANEL
4	1	S261	RIGHT HAND BEATER PANEL
5	1	S265	RIGHT HAND BEATER SHAFT
6	1	S451	LEFT HAND BEATER SHAFT
7	2	F14	BEARING FLANGE
8	2	F115	BEARING (GREASEABLE TYPE)
9	2	F114	BEARING FLANGE W/ZERK
10	2	F16	LOCK COLLAR
11	2	F73	SNAP RING
12	4	S47	GREASE LINE FITTING
13	2	SD142	GREASE LINE
14	1	G23B	KEY (5/16" X 1-3/8")
15	1	SD143	4TH BEATER SHIELD
16	1	S26	BEATER SPROCKET (20 T
17	1	SD144	CHAIN TIGHTENER
18	1	X61	#50 CONNECTOR LINK
19	1	SD145	4TH BEATER CHAIN (#50 X 72 PITCHES)
20	1	S266	3RD BEATER SPROCKET (#50 X 20 TOOTH TO 16 TOOTH)
21	1	SD146	GREASE BLOCK (4 PORT)
22	1	S262	SPACER
23	2	YBHH08100	BOLT, 1/4" X 3/4" GR. 5
24	6	YBHH12010	BOLT, 3/8" X 1" GR. 5
25	1	YBHH12120	BOLT, 3/8" X 3" GR. 5
26	4	YBHH12145	BOLT, 3/8" X 3-1/2" GR. 5
27	2	YWFL08005	WASHER, FLAT, 1/4" USS
28	4	YWFL12005	WASHER, FLAT, 3/8" USS
29	2	YWLO08005	WASHER, LOCK, 1/4"
30	7	YWLO12005	WASHER, LOCK, 3/8"
31	2	YNHX08005	HEX NUT, 1/4"-20
32	7	YNHX12005	HEX NUT, 3/8"-16
33	4	YNRL12005	HEX NUT, REVERSIBLE-SIDE LOCK, 3/8"-16

FIGURE 17

LIGHT HARNESS

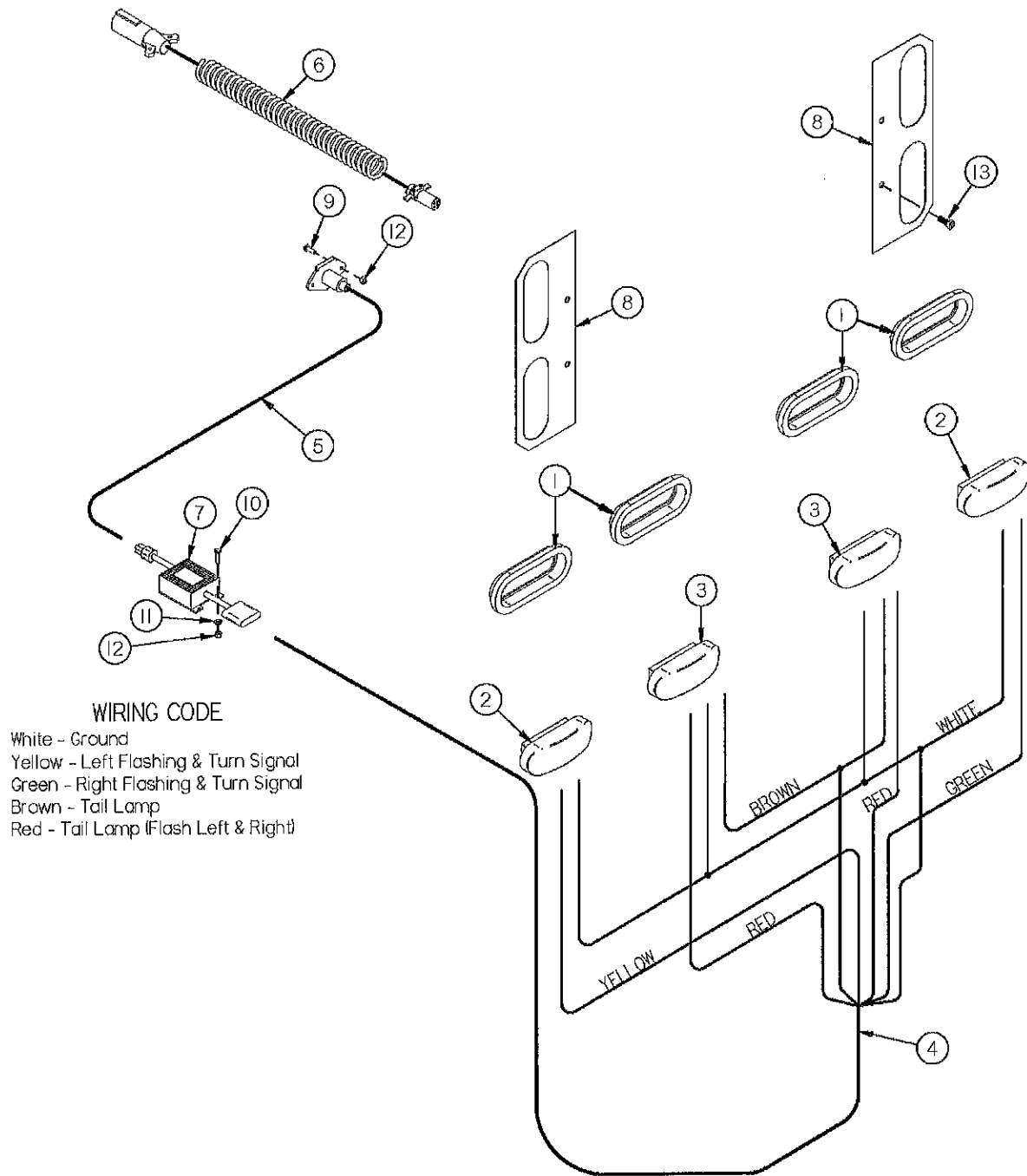


FIGURE 17
LIGHT HARNESS

<u>ITEM</u>	<u>QTY</u>	<u>PART #</u>	<u>DESCRIPTION</u>
1	4	S308	RUBBER LIGHT MOUNT
2	2	S309	AMBER LIGHT
3	2	S310	RED LIGHT
4	1	PB232	LIGHT HARNESS (6 WIRE)
5	1	S443	16' LONGITUDINAL CORD (4 WIRE)
*	1	S442	18' LONGITUDINAL CORD (4 WIRE)
*	1	S439	20' LONGITUDINAL CORD (4 WIRE)
6	1	S317	TRACTOR CORD (OPTIONAL)
7	1	S441	LIGHT MODULE
8	2	PB111	TAILLIGHT BRACKETS (2-WAY ONLY)
*	1	PB239	16' COMPLETE LIGHT ASSEMBLY LESS OPTIONAL TRACTOR CORD
*	1	PB240	18' COMPLETE LIGHT ASSEMBLY LESS OPTIONAL TRACTOR CORD
*	1	PB241	20' COMPLETE LIGHT ASSEMBLY LESS OPTIONAL TRACTOR CORD
9	2	YBHH08015	BOLT, 1/4" X 1/2" GR. 5
10	3	YBHH08010	BOLT, 1/4" X 1" GR. 5
11	3	YWLO08005	WASHER, LOCK, 1/4"
12	5	YNHX08005	HEX NUT, 1/4"-20
13	6	YSHW10010	5/16"-18 X 1-1/4" HEX WASHER SLOT TYPE F ZINC THREAD CUTTING SCREW

NOTE: * MEANS NOT SHOWN

FIGURE 18

ELECTRIC CONTROL

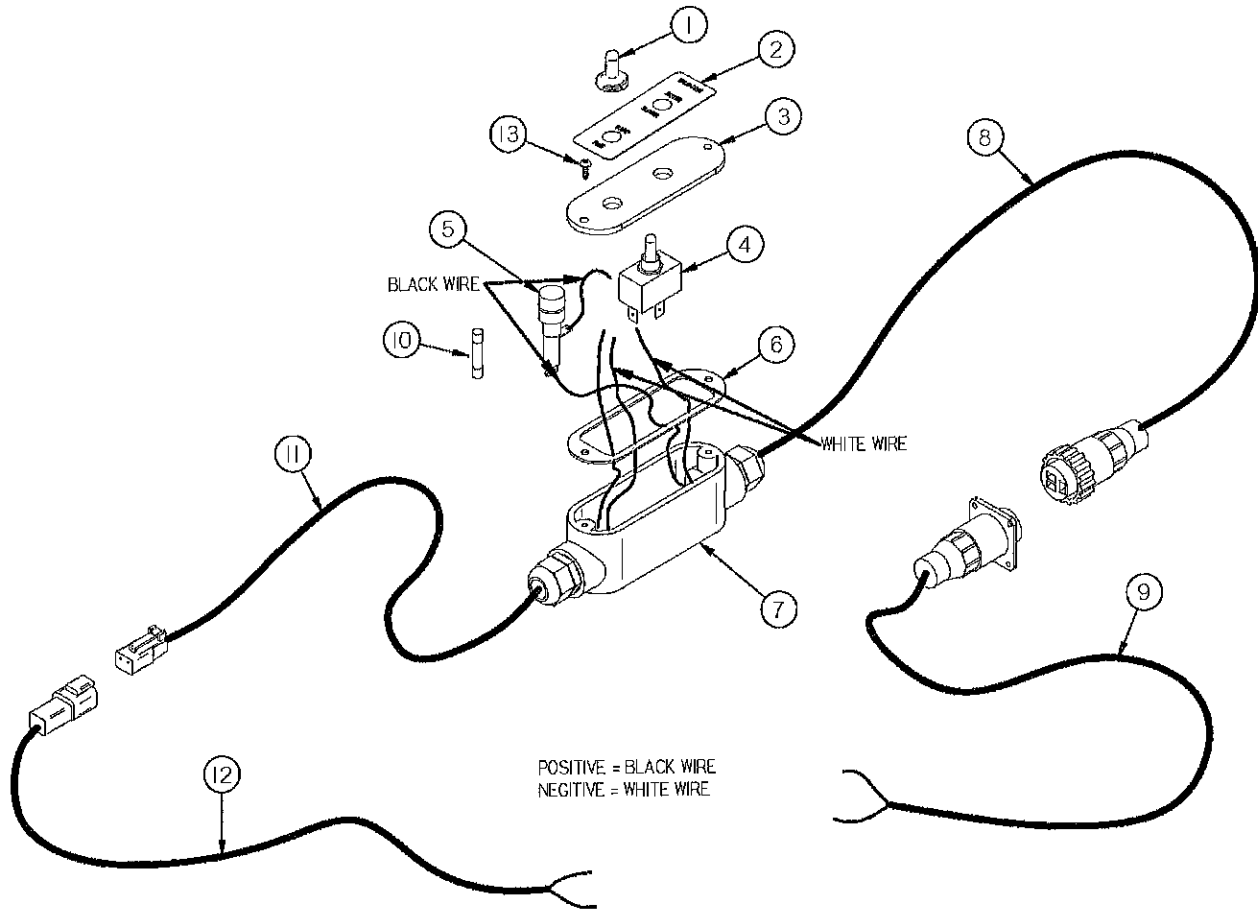


FIGURE 18

ELECTRIC CONTROL

<u>ITEM</u>	<u>QTY</u>	<u>PART #</u>	<u>DESCRIPTION</u>
1	1	16SV235	SWITCH BOOT
2	1	21897A	DECAL
3	1	16SV318	CONTROL BOX COVER
4	1	16SV319	SPEED SWITCH
5	1	16SV231	FUSE HOLDER
6	1	16SV317	CONTROL BOX GASKET
7	1	16SV316	CONTROL BOX
8	1	16SV271	CONTROL BOX POWER SUPPLY
9	1	16SV269	TRACTOR END
10	1	16SV232	FUSE, 5 AMP. (AGC-5)
11	1	16SV270	TRACTOR POWER SUPPLY
12	1	56N134	SPREADER CONTROL CORD
13	2	YSP62005	PAN HEAD PHILLIPS SHEET METAL SCREW, #8 X 1/2
*	1	16SV321	CONTROL BOX COMPLETE

NOTE: * MEANS NOT SHOWN

FIGURE 19

EXTENSION HYDRAULICS

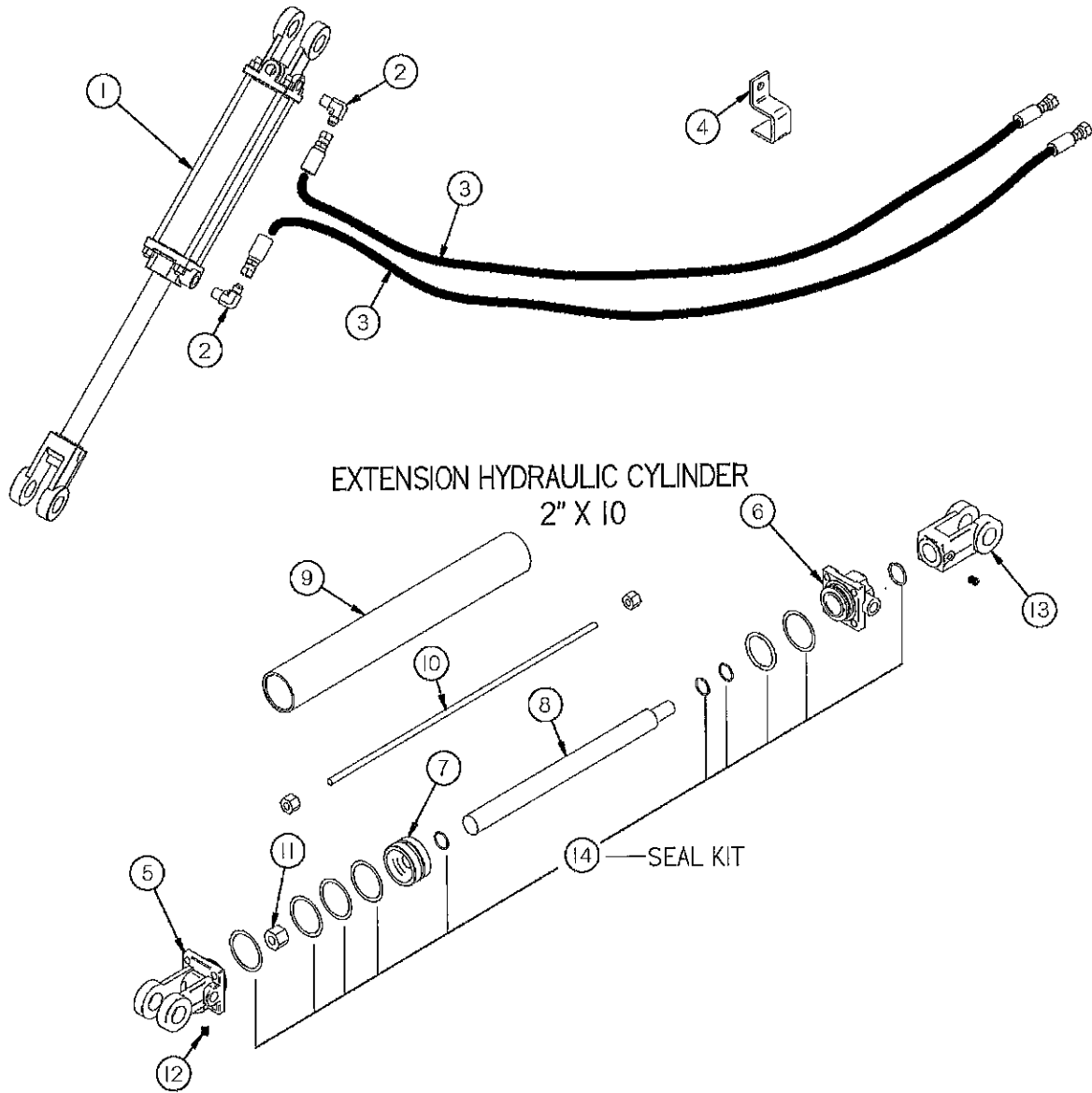


FIGURE 19

EXTENSION HYDRAULICS

<u>ITEM</u>	<u>QTY</u>	<u>PART #</u>	<u>DESCRIPTION</u>
1	1	16SV171	2" x 10" CYLINDER
2	2	CHM164	MALE CONNECTOR (6-6 CTX)
3	2	SDHMS03	HYDRAULIC HOSE 3/8" X 192" (106HY-6-6, 101HY-8-6)
4	4	HE14	HOSE CLAMP
5	1	23N142	CLEVIS CAP
6	1	23N143	ROD CAP
7	1	23N144	PISTON
8	1	16SV168	PISTON NUT
9	1	16SV169	TUBE
10	4	16SV170	TIE ROD
11	1	23N148	PISTON NUT
12	2	23N149	PLUG
13	1	23N150	ROD CLEVIS
14	1	23N151	SEAL KIT

FIGURE 20

GATE DELAY

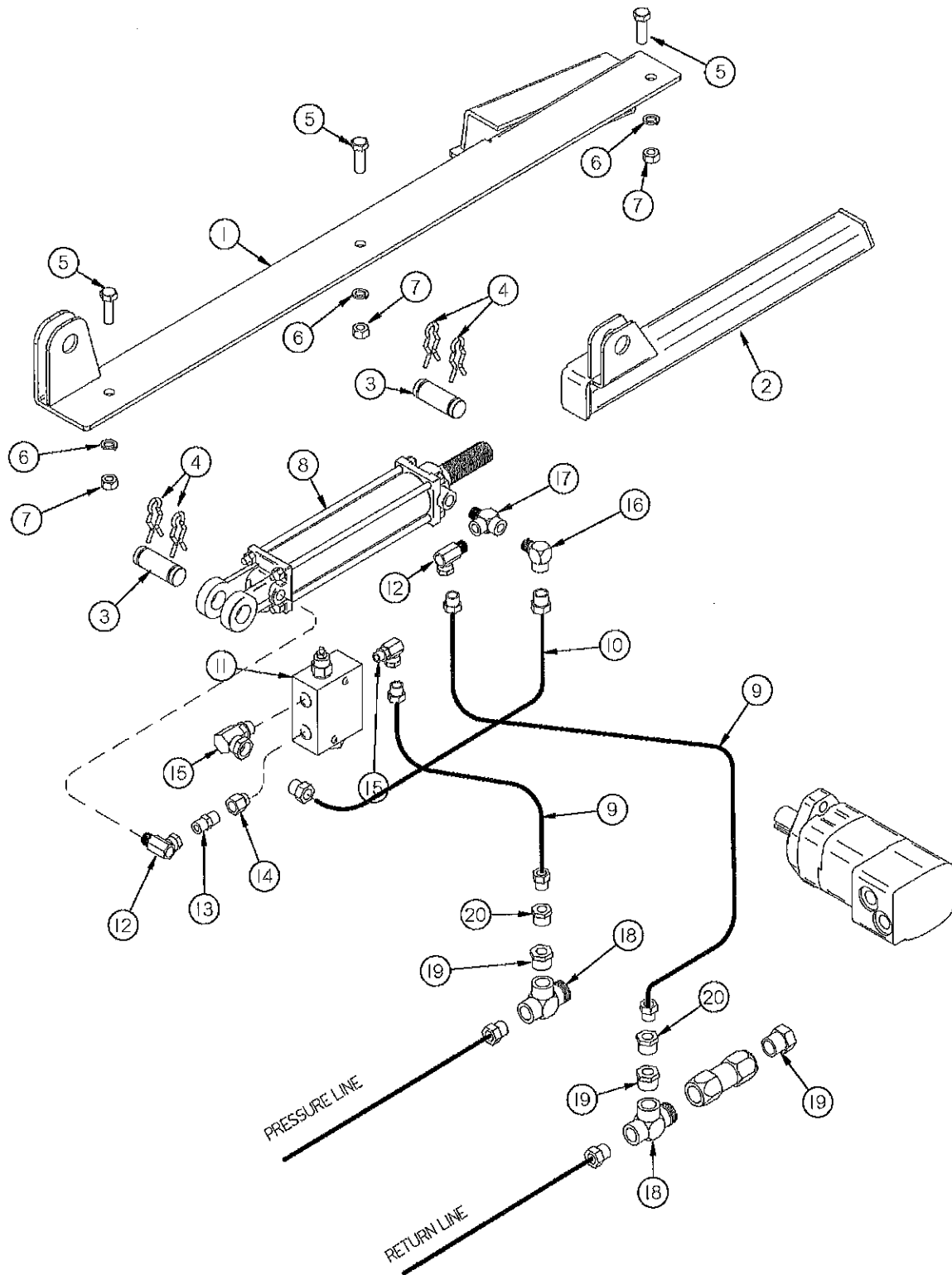


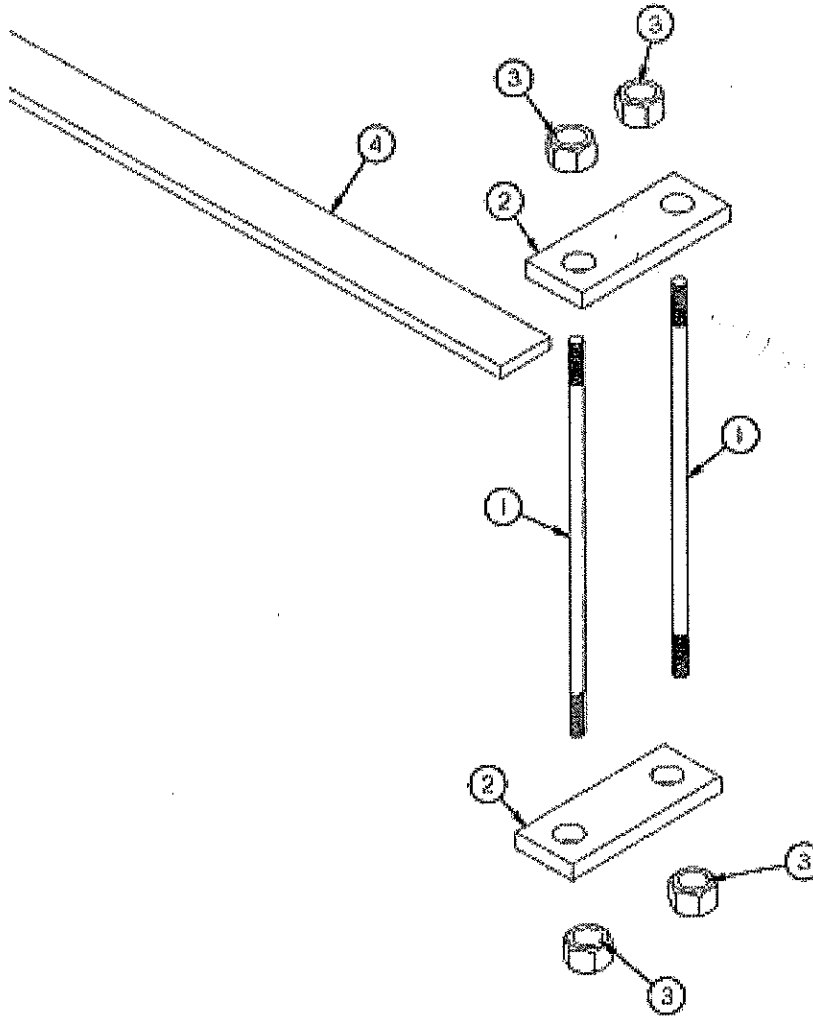
FIGURE 20

GATE DELAY

<u>ITEM</u>	<u>QTY</u>	<u>PART #</u>	<u>DESCRIPTION</u>
1	1	GD54	HYDRAULIC SLIDE CHANNEL
2	1	GD55	HYDRAULIC PUSH TUBE
3	2	T143	CYLINDER PIN
4	4	T144	HAIR PIN
5	3	YBHH16030	BOLT, 1/2" X 1-1/2" GR. 5
6	3	YWLO16005	WASHER, LOCK, 1/2"
7	3	YNHX16005	HEX NUT, 1/2"
8	1	BFR69A	2" X 8" CYLINDER
9	2	GD60	HOSE 3/8" X 162" 3/8" MP & 3/8" MP
10	1	DWM154	HOSE 1/4" X 24" 3/8" MP & 3/8" MP
11	1	GD56	PRESSURE REDUCING VALVE (PPDBLDN-E2I)
12	2	DWM110	3/8" 90° SWIVEL ADAPTER
13	1	16SV351	3/8" CLOSE NIPPLE
14	1	GD57	9/16" MALE O-RING TO 3/8" PIPE ADAPTER (6405-6-6)
15	2	JB76	9/16" MALE O-RING TO 3/8" PIPE 90° SWIVEL
16	1	23N234	3/8" STREET ELBOW
17	1	23N116	3/8" STREET TEE
18	2	33SV71	3/4" SERVICE TEE
19	3	LW99	1/2" TO 3/4" BUSHING
20	2	JB82	1/2" TO 3/8" BUSHING

FIGURE 21

TIEDOWN



<u>ITEM</u>	<u>QTY</u>	<u>PART #</u>	<u>DESCRIPTION</u>
1	16	FBC6	MOUNT BOLT (24")
2	16	FBC5	CHASSIS MOUNT PLATE
3	32	YNNY24006	HEX NUT, NYLON LOCKNUT, 3/4" (FINE)
4	2	S509	CHASSIS SPACER 1" x 4" x 22'

NOTE: * (AS SHOWN ON 22' BOX)